

VIRGINIA HOMES

MANUFACTURING CORPORATION

COLLECTION OF HOMES



VIRGINIA HOMES MFG.

P.O. BOX 410

BOYDTON, VA 23917

(434) 738-6107

WWW.VIRGINIAHOMESMFG.COM

STANDARD FEATURES OF VIRGINIA HOMES

Insulation – Requirements may Vary by Location

- R-15 Exterior Walls
- R-19 Floors
- R-38 Ceiling
- Air Infiltration Wrap

Roof

- 30 Year Architectural Style Roofing Shingles
- 30# Felt Underlayment and Ridge Vent
- 7/12 Roof Pitch on Ranches
- 12/12 Roof Pitch on Capes and Saltboxes
- 7/12 or 12/12 Roof Pitch on Two Stories (depending on model)
- Roof Rafters 16" o.c. with 7/16" OSB Sheathing
- 16" Overhang on Front and Rear for 5/12 and 7/12 Pitch Roofs
- 14" Overhang on Front and Rear 9/12 Pitch Roofs
- 8" Overhang on Front and Rear 12/12 Pitch Roofs
- 12" Overhang on Gable Ends (all models)
- Pull down attic stairs on 7/12 and 9/12 Pitch Roofs

Exterior Walls

- Premium Vinyl Siding - .044" thickness, Double Traditional Lap or Double Dutchlap
- 15 inch Raised Panel Shutters – Front and Sides
- 7/16" Structural OSB Sheathing
- 2x4 Wall Studs, 16" o.c.
- Double 2x4 Top and Single 2x4 Bottom Plate
- Vented Soffit, 6" Metal Fascia

Interior Walls and Ceiling

- 2x4 Interior Walls, 16" o.c.
- 2x4 Marriage Walls, 16" o.c.
- 8 Foot Ceiling Height
- ½" Drywall – Smooth Finish Walls with 2 Coats of Paint

Exterior Doors and Windows

- 36" Insulated 6 Panel Fiberglass Front Door with Metal Threshold
- 32" Insulated 9 Lite Rear Door "No Rot" Bottom of Door Jams
- Double Hung, Tilt Sash, Low "E" Insulated Glass White Vinyl Windows
- Dead Bolt Lock– Front and Rear Doors

Interior Doors and Trim

- Pre-Painted White 6 Panel Interior Doors
- Pre-Painted White Window Casing
- Pre-Painted Floor and Ceiling Moldings
- Satin Nickel Hardware
- White Epoxy Coated Wire Closet Shelves and Rods
- Privacy Locks on Bathrooms and Bedrooms
- Door Stops
- Three Butt Hinges on All Interior Doors

Floors

- 2x10 Floor Joists, 16" o.c.
- Finished Space - 23/32" Tongue and Groove OSB Single Layer Floor-Glued and Fastened
- Second Floor of Cape Cod and Salt Box Unfinished Space – 19/32" OSB

Electrical

- 200 AMP Service with Circuit Breakers
- Exterior Door Lights
- Door Chime at Front Door
- 2 Telephone Jacks
- 2 Cable TV Jacks
- Wired for Ceiling Light in Dining Room with Dimmer Switch
- Wired and Braced for Ceiling Fan and Light in Living Room and Bedrooms
- Light Fixtures for Halls, Utility Room and Walk-in Closets
- Automatic Smoke Detectors Interconnected with Battery Backup
- 110 Volt Washer Receptacle
- Electrical Wired per National Electric Code
- Ground Fault Circuit Interrupters for External Receptacles and Bath and Kitchens
- 2 Weatherproof Outside Receptacles
- Dimmer Switch for Dining Room Light
- Boots and Registers for HVAC
- 8 Wire Thermostat

STANDARD FEATURES OF VIRGINIA HOMES

Floor Covering

- 16" Vinyl Floor Tile
- 24 oz. Shaw Carpet with 7/16" (6 lb. density) pad

Plumbing

- 40 Gallon Electric Water Heater - Double Element
- Water Shut-Off for All Fixtures
- Washer Plumbing
- Whole House Water Shut-Off
- PVC Drain Lines
- 2 Outside Freezeless Water Faucets
- Plumb For Dishwasher
- Plumb for Icemaker

Baths

- Custom Built Oak Vanities with Nickel Hardware
- Drawers in Vanities 36" and Larger
- 60" One-Piece Fiberglass Tub
- One-Piece Fiberglass Shower or Garden Tub (specified on select models)
- Single Lever Delta Anti-Scald Faucets and Pressure Balanced Faucet on Shower
- Lighted Exhaust Fans
- Glass Mirror
- Wired for Light Fixture above Mirrors
- Water Saver Commode

Kitchens

- Recessed Can Lights (5) including Separately Switched Recessed Can over Kitchen Sink
- Custom Built Oak Cabinets with Nickel Hardware
- Concealed Cabinet Hinges
- 7.5" Deep Stainless Double Bowl Sink
- Drawer over Door Base Construction
- Single Lever Faucet with Sprayer Attachment
- Stainless Steel Double Bowl Sink
- Range Hood with Light (Unless Specified for Microwave)

Additions for Cape Cods

- 110 Volt Electrical Circuit to Junction Box for Future Lighting Circuit on Second Level
- Rough-in Plumbing for Future Second Floor Bath
- Carpet on Stairs to Second Floor, Oak Railings
- Engineered Rafters 16" o.c., Trusses serve as floor for second level

Additions for Traditional Two Stories and Saltboxes

- First Floor Ceiling Joist 2x6, 16" o.c.
- Second Floor - Floor Framing 2x10, 16" o.c. (Living Space on Saltboxes)
- Carpet on Stairs to Second Floor, Oak Railings

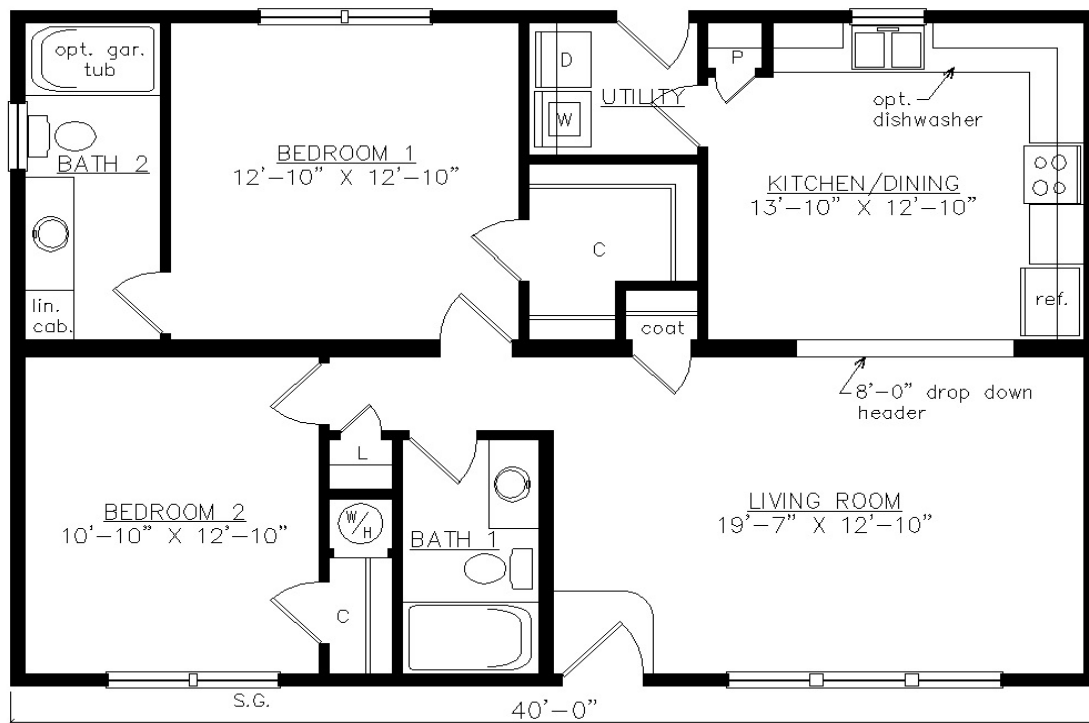
* The features above are standard in every home, but a multitude of options are available. Please contact a Virginia Homes Manufacturing representative for details.

* Because of continuous product development, Virginia Homes Mfg. may change specifications and materials without notice. Square footage and dimensions are approximate. Floor plans and renderings may be shown with optional on-site built features.

PORTLAND



SHOWN WITH OPTIONAL ON-SITE BUILT PORCH
AND FANLITE DOOR
1093 SQ. FT. BEDROOMS: 2 BATHS: 2

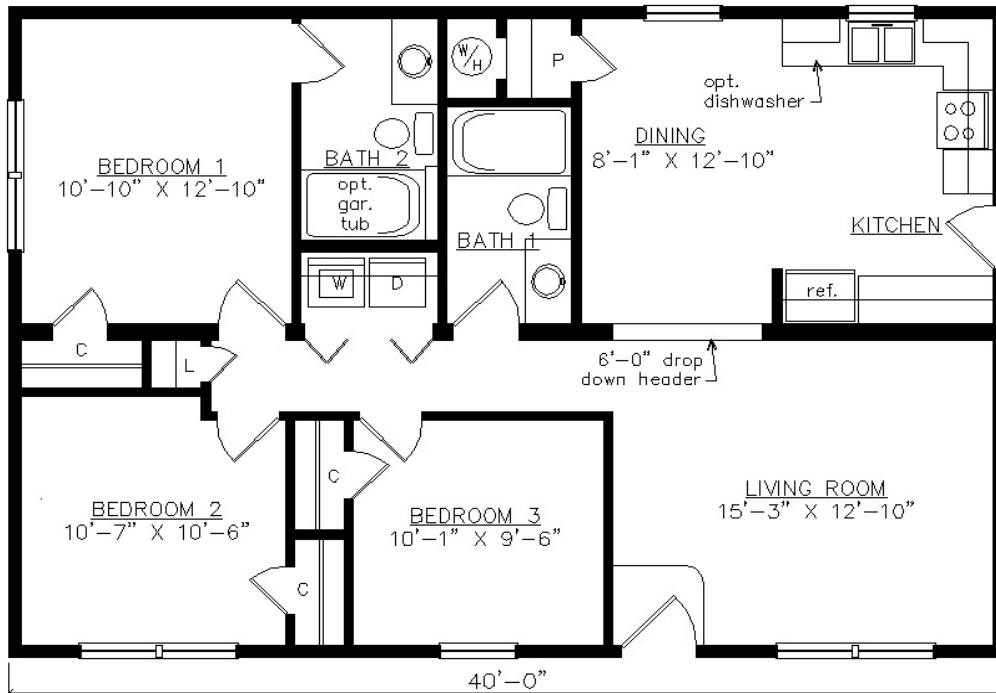


SHOWN WITH OPTIONAL 6" EXTERIOR WALLS

MECKLENBURG



SHOWN WITH OPTIONAL ON-SITE BUILT GABLE
PORCH AND FANLITE DOOR
1093 SQ. FT. BEDROOMS: 3 BATHS: 2

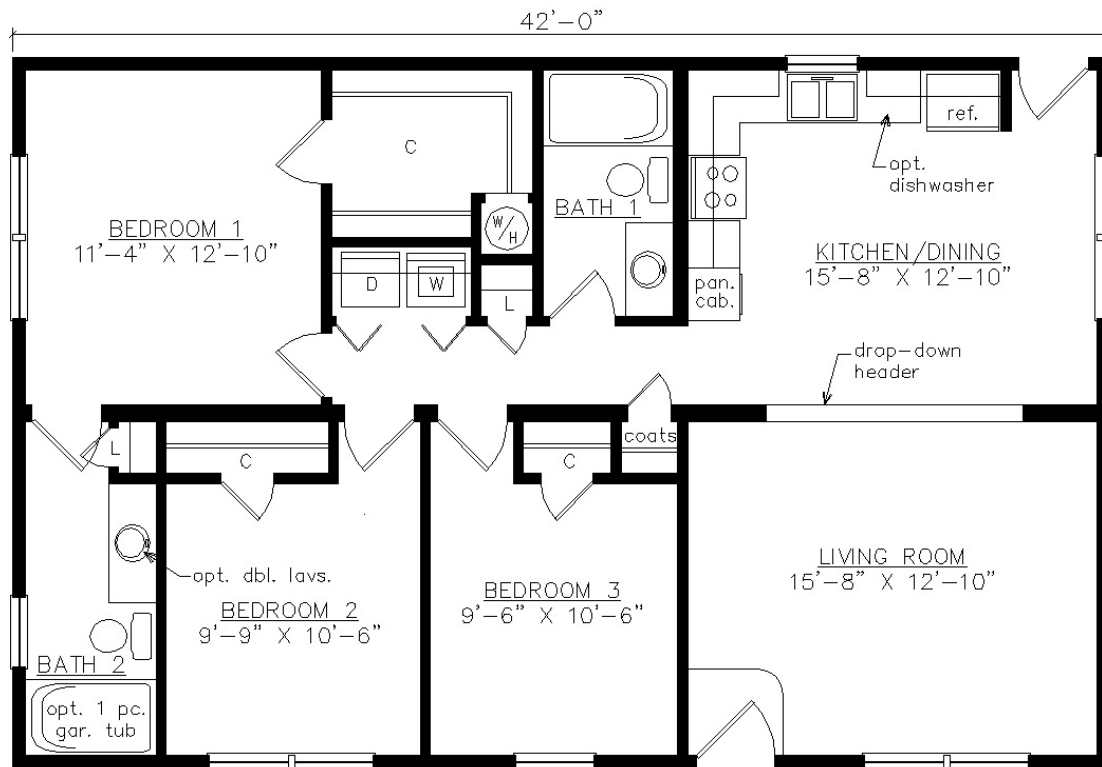


SHOWN WITH OPTIONAL 6" EXTERIOR WALLS

BUENA VISTA



SHOWN WITH OPTIONAL ON-SITE BUILT PORCH
AND FANLITE DOOR
1148 SQ. FT. BEDROOMS: 3 BATHS: 2

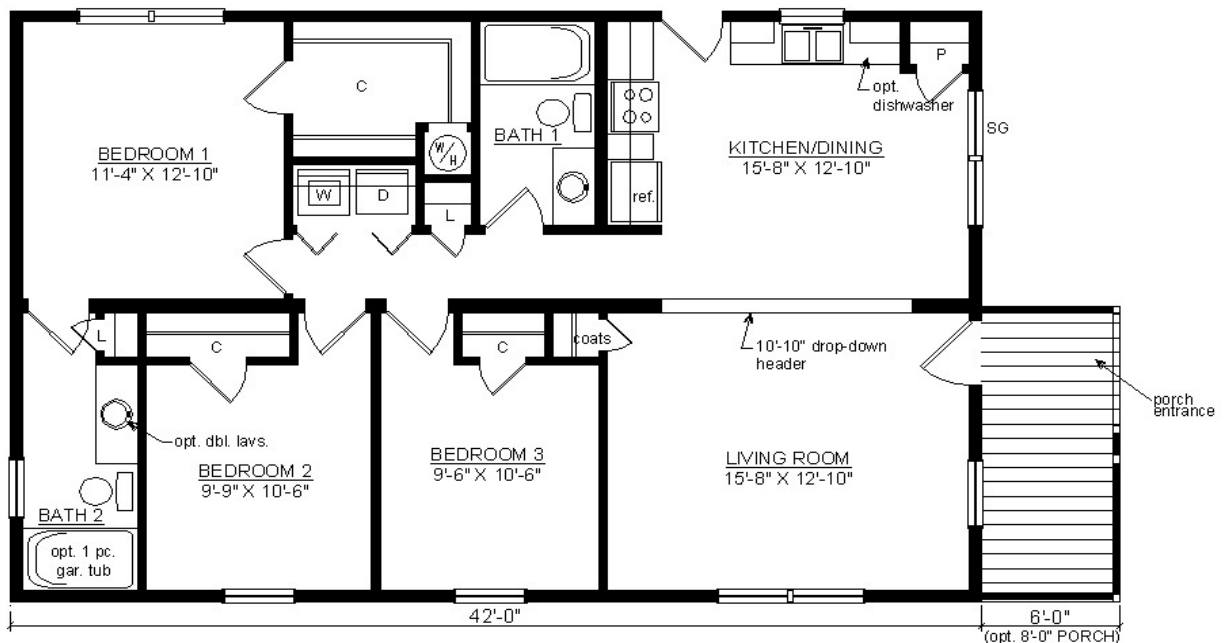


SHOWN WITH OPTIONAL 6" EXTERIOR WALLS

ROCKBRIDGE



SHOWN WITH OPTIONAL CRAFTSMAN WINDOWS, TRIANGLE GABLE VENT AND CRAFTSMAN DOOR
 1148 SQ. FT. WITHOUT PORCH 1257 SQ. FT. WITH 8'-0" PORCH 1230 SQ. FT. WITH 6'-0" PORCH
 BEDROOMS: 3 BATHS: 2

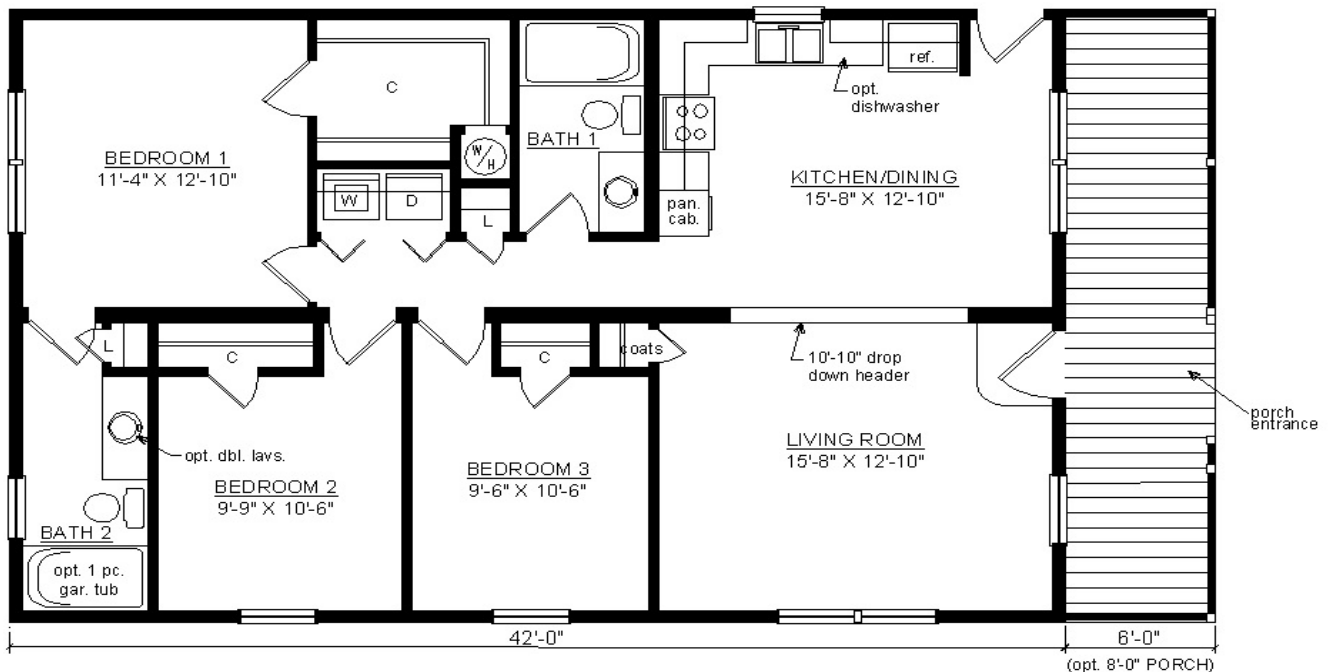


SHOWN WITH OPTIONAL 6" EXTERIOR WALLS

AVON



SHOWN WITH OPTIONAL FANLITE DOOR OR CRAFTSMAN DOOR
 1148 SQ. FT. WITHOUT PORCH 1312 SQ.FT. WITH 6'-0" PORCH 1367 SQ.FT. WITH 8'-0" PORCH
 BEDROOMS: 3 BATHS: 2

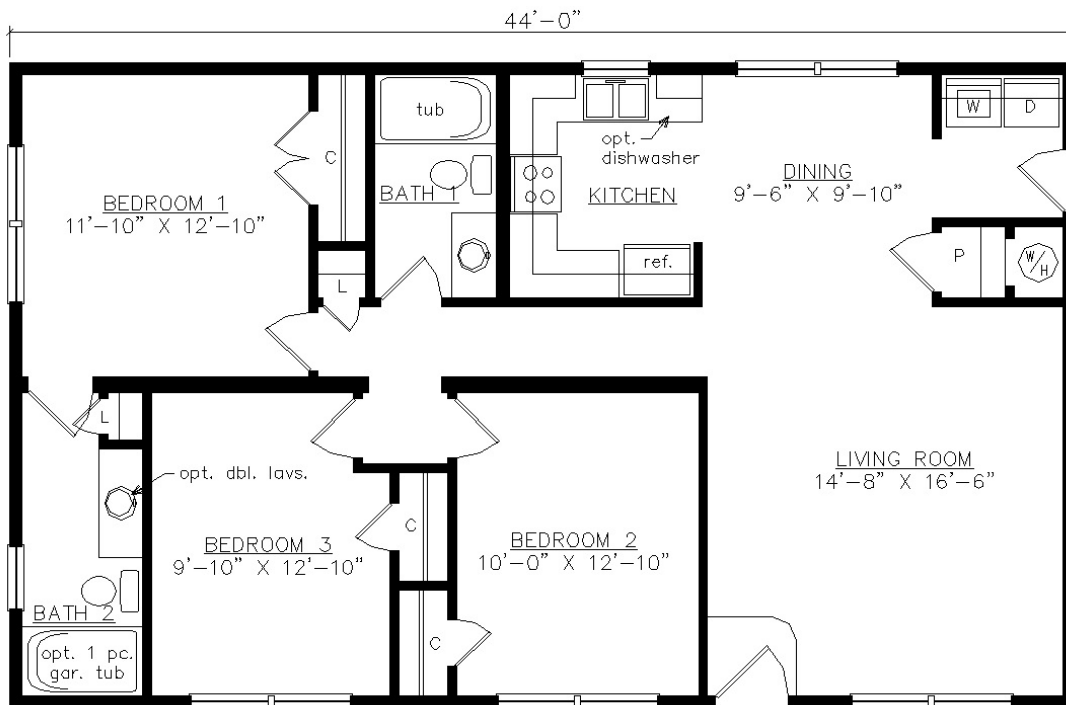


SHOWN WITH OPTIONAL 6" EXTERIOR WALLS

YORK

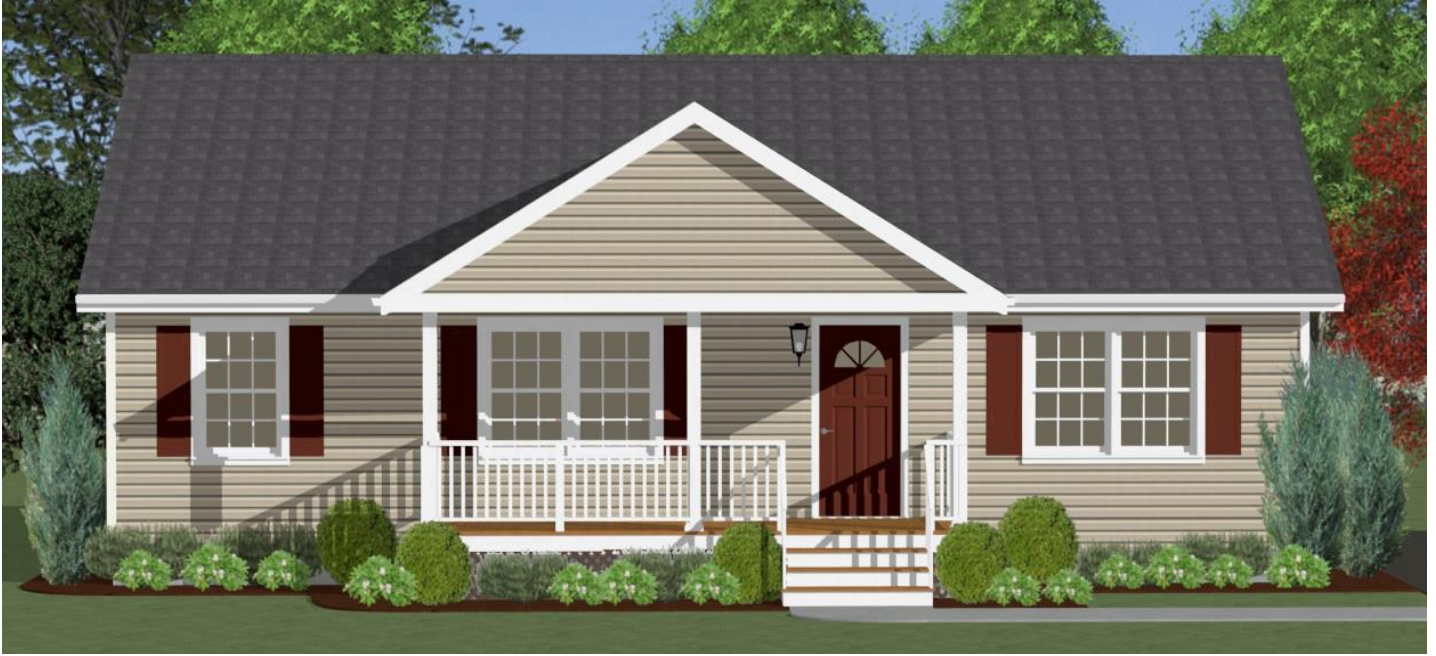


SHOWN WITH OPTIONAL ON-SITE BUILT GABLE PORCH,
CRAFTSMAN WINDOWS AND CRAFTSMAN DOOR
1203 SQ. FT. BEDROOMS: 3 BATHS: 2

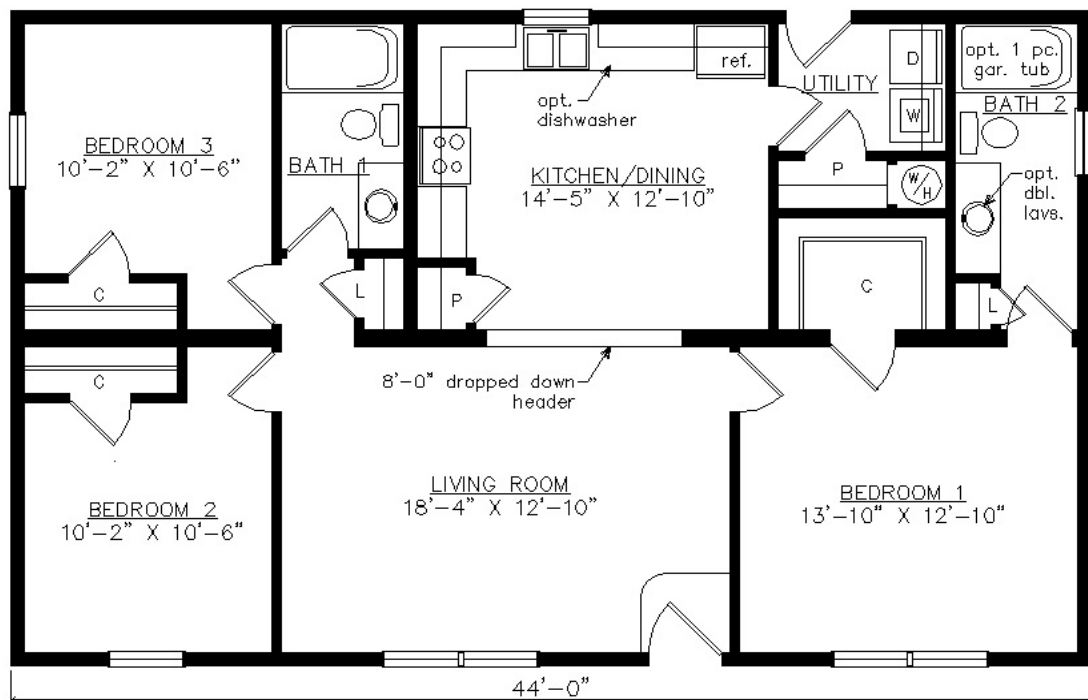


SHOWN WITH OPTIONAL 6" EXTERIOR WALLS

MILLBROOK



SHOWN WITH OPTIONAL ON-SITE BUILT GABLE PORCH
AND FAN LITE DOOR
1203 SQ. FT. BEDROOMS: 3 BATHS: 2

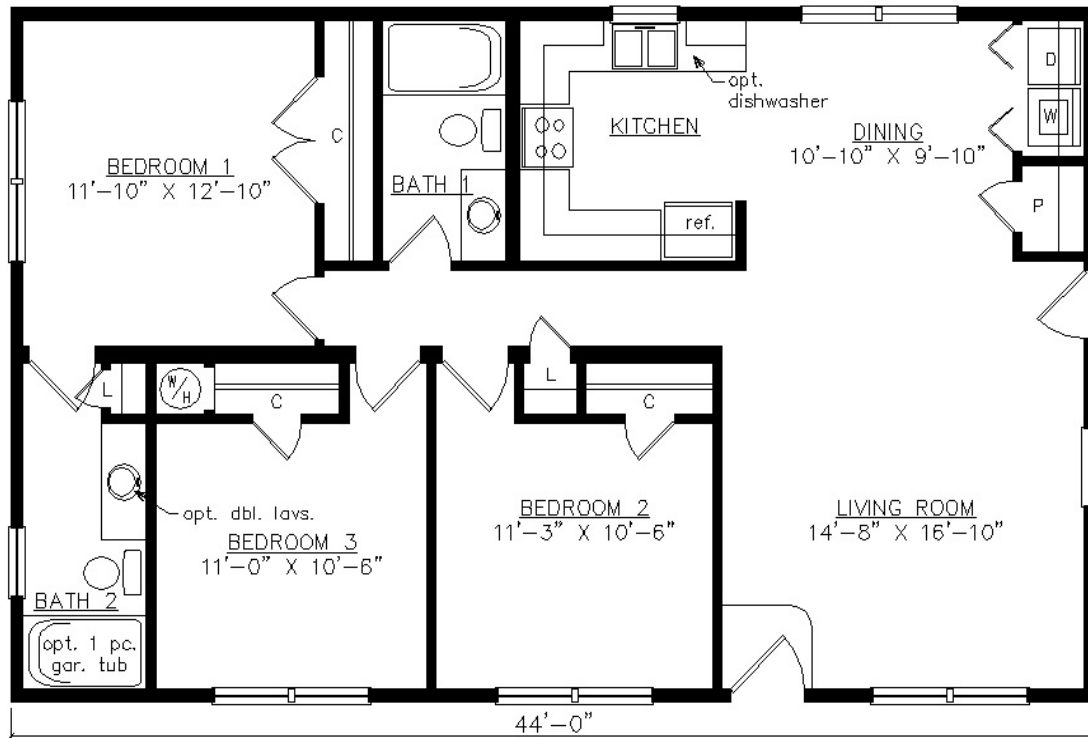


SHOWN WITH OPTIONAL 6" EXTERIOR WALLS

KENDALL



SHOWN WITH OPTIONAL ON-SITE GABLE PORCH
AND CRAFTSMAN DOOR
1203 SQ. FT. BEDROOMS: 3 BATHS: 2

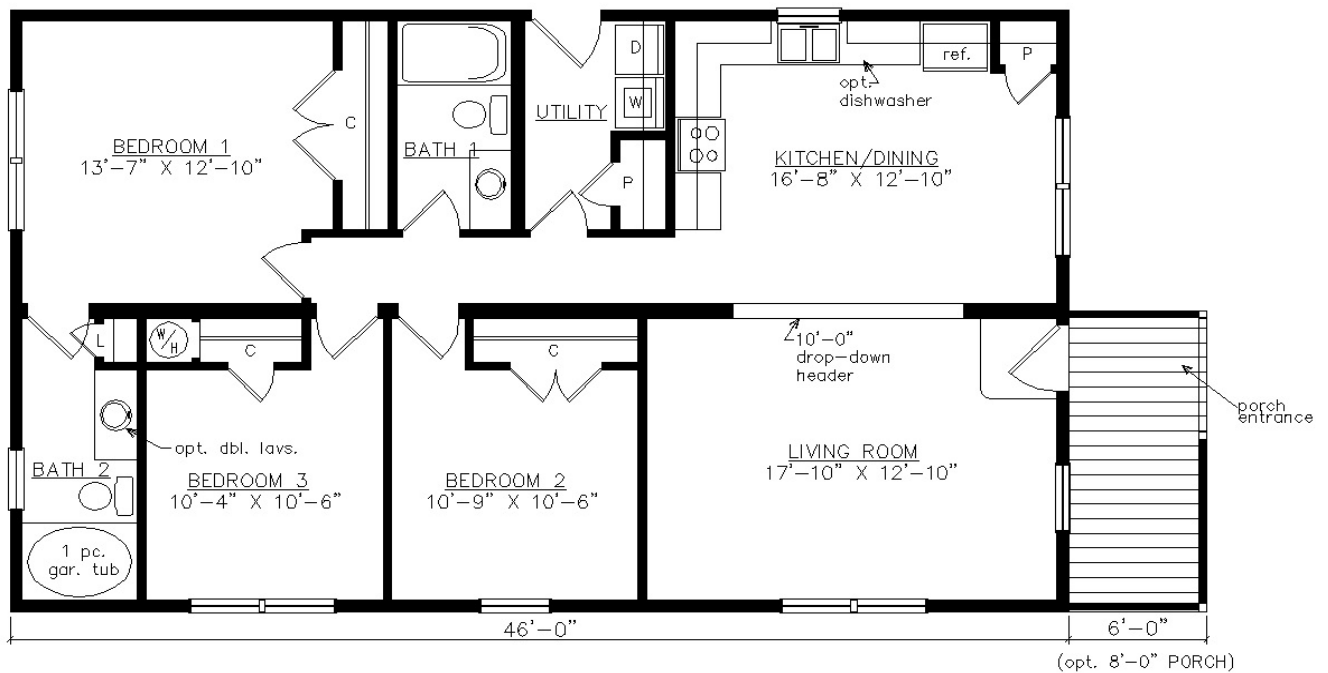


SHOWN WITH OPTIONAL 6" EXTERIOR WALLS

CURRITUCK



SHOWN WITH OPTIONAL ON-SITE BUILT SHED PORCH,
 GARAGE CRAFTSMAN WINDOWS AND CRAFTSMAN DOOR
 1257 SQ. FT. WITHOUT PORCH 1367 SQ.FT. WITH 8'-0" PORCH 1339 SQ.FT. WITH 6'-0" PORCH
 BEDROOMS: 3 BATHS: 2

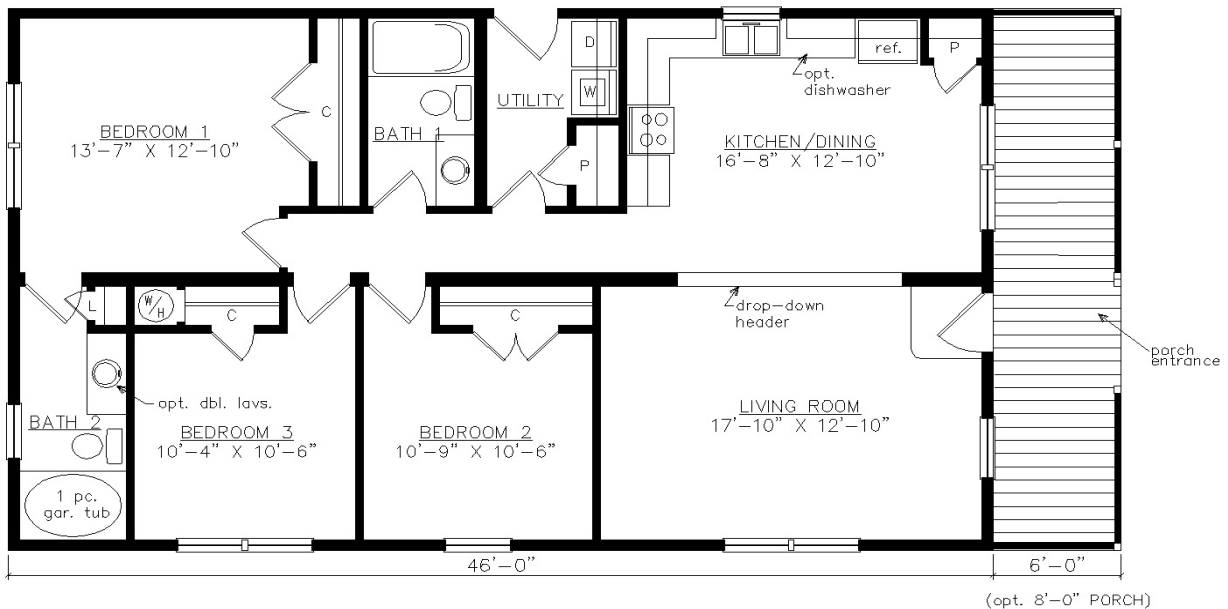


SHOWN WITH OPTIONAL 6" EXTERIOR WALLS

RODANTHE



SHOWN WITH OPTIONAL ON-SITE BUILT GARAGE OR CRAFTMAN DOOR
 1257 SQ. FT. WITHOUT PORCH 1476 SQ.FT. WITH 8'-0" PORCH 1421 SQ.FT. WITH 6'-0" PORCH
 BEDROOMS: 3 BATHS: 2

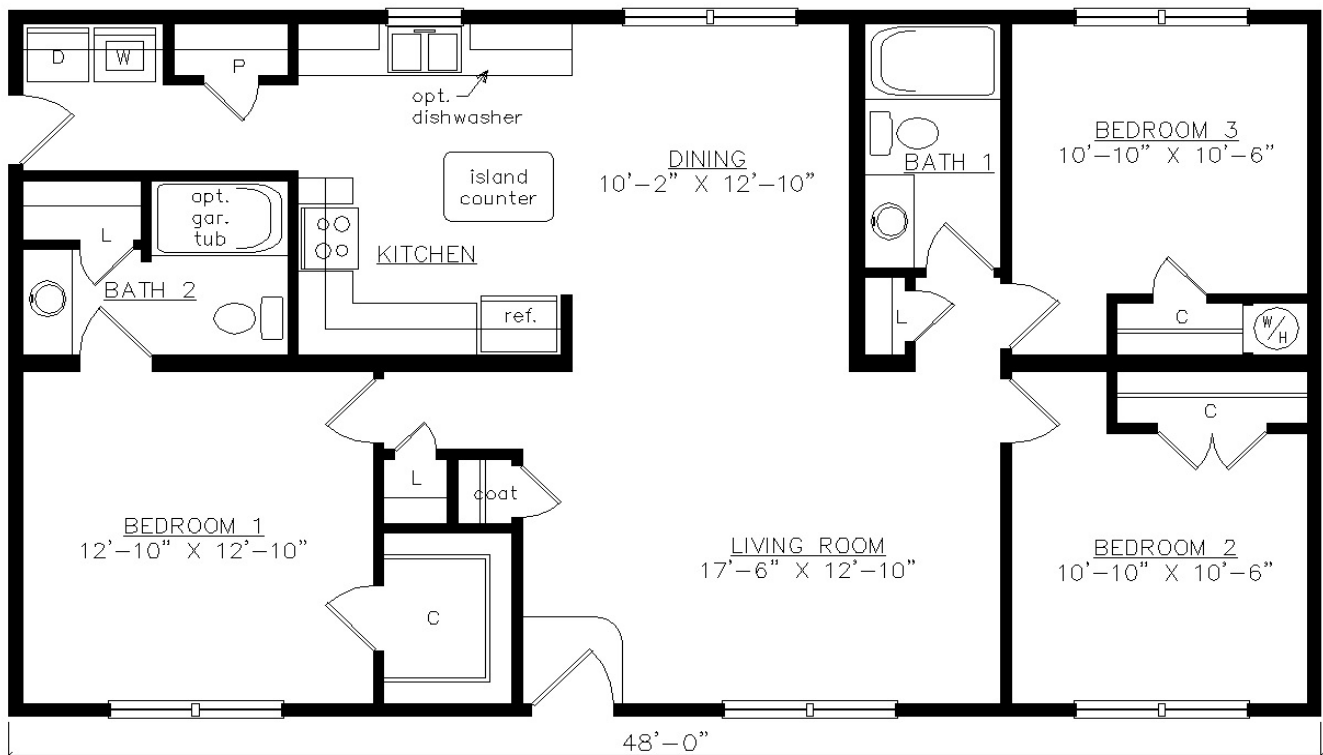


SHOWN WITH OPTIONAL 6" EXTERIOR WALLS

HILLCREST I



SHOWN WITH OPTIONAL RAISED ROOF ON-SITE BUILT PORCH, TRIANGLE GABLE VENT AND FANLITE DOOR
1312 SQ. FT. BEDROOMS: 3 BATHS: 2

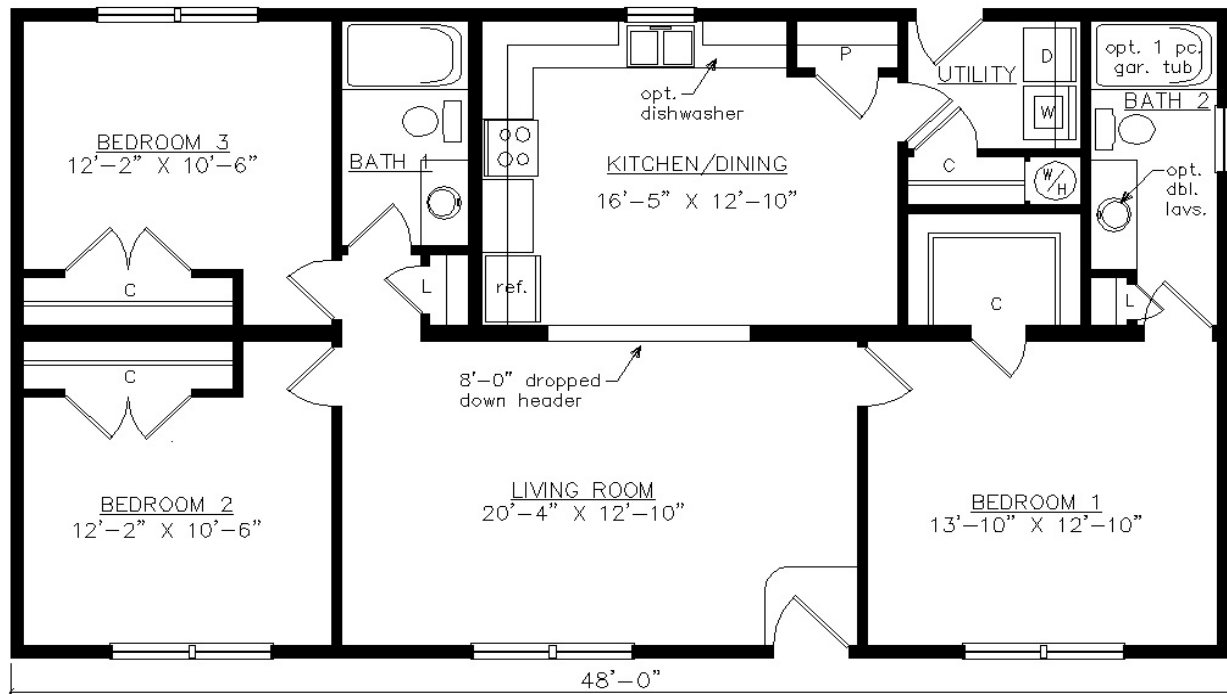


SHOWN WITH OPTIONAL 6" EXTERIOR WALLS

MILLBROOK I



SHOWN WITH OPTIONAL ON-SITE BUILT GABLE PORCH ACCENT SHAKES,
CRAFTSMAN WINDOWS AND CRAFTSMAN DOOR
1312 SQ. FT. BEDROOMS: 3 BATHS: 2



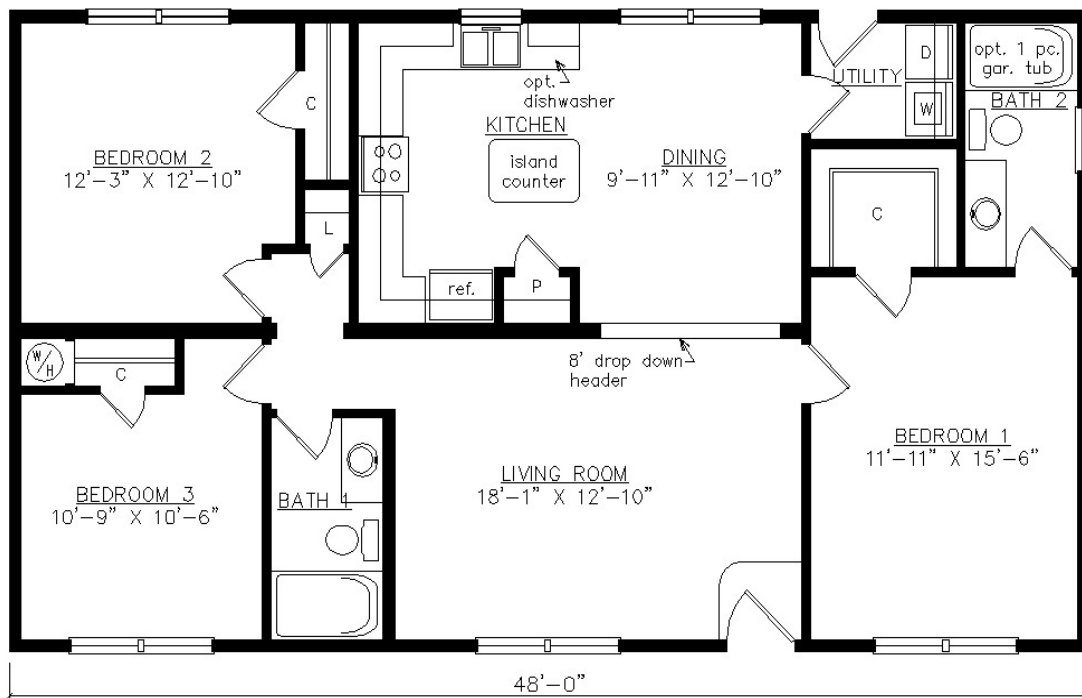
SHOWN WITH OPTIONAL 6" EXTERIOR WALLS

WWW.VIRGINIAHOMESMFG.COM

NEWCASTLE



SHOWN WITH OPTIONAL ON-SITE BUILT GABLE PORCH, ACCENT SHAKES,
CRAFTSMAN WINDOWS AND CRAFTSMAN DOOR
1312 SQ. FT. BEDROOMS: 3 BATHS: 2

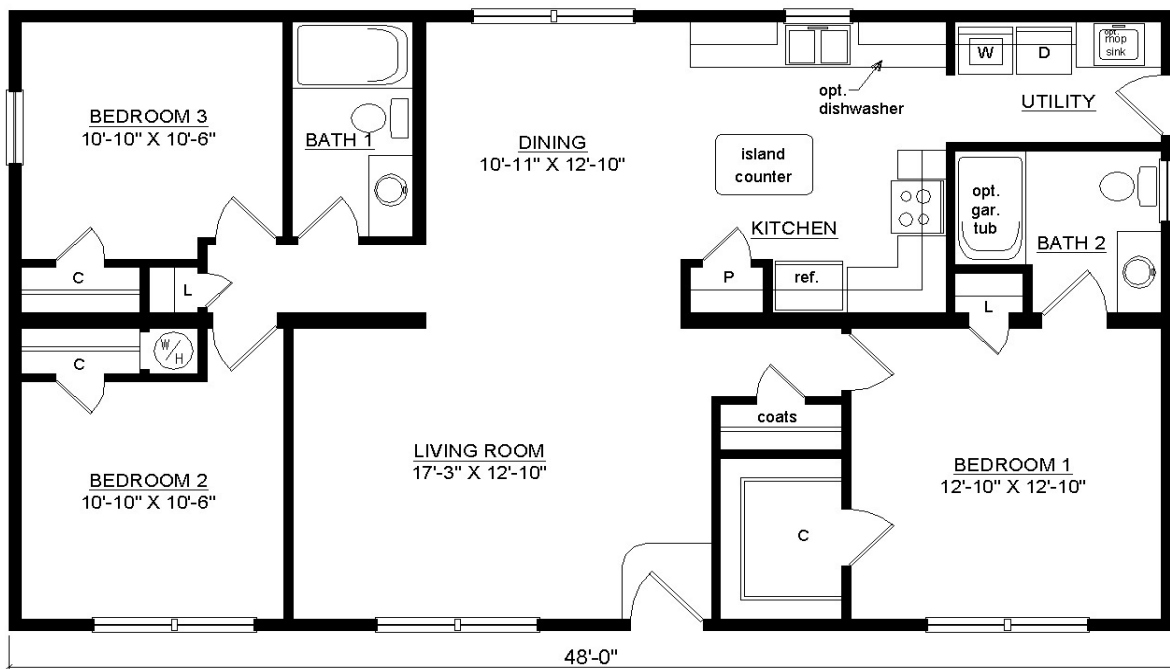


SHOWN WITH OPTIONAL 6" EXTERIOR WALLS

HUNTINGTON PARK



SHOWN WITH OPTIONAL ON-SITE BUILT RAISED ROOF PORCH AND FANLITE DOOR
1312 SQ. FT. BEDROOMS: 3 BATHS: 2

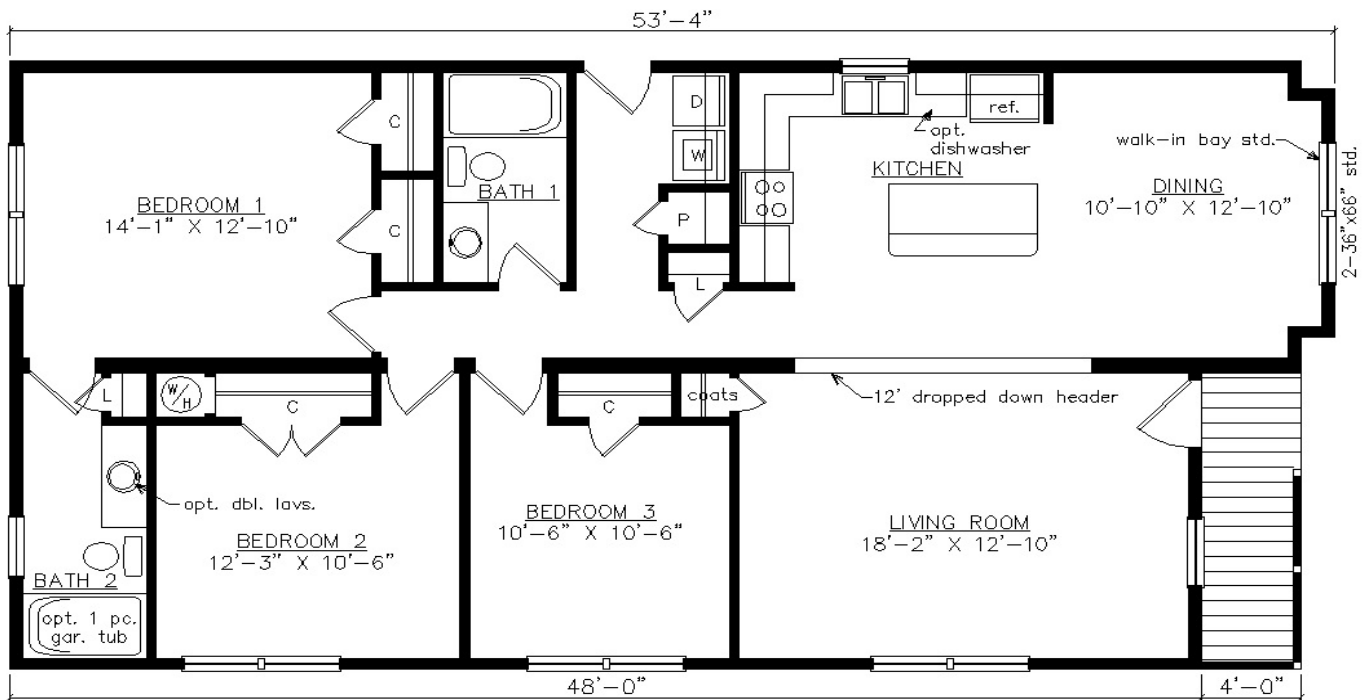


SHOWN WITH OPTIONAL 6" EXTERIOR WALLS

SANDPIPER III



SHOWN WITH OPTIONAL FANLITE DOOR
 1383 SQ. FT. WITH OUT PORCH 1436 SQ. FT. WITH PORCH BEDROOMS: 3 BATHS: 2

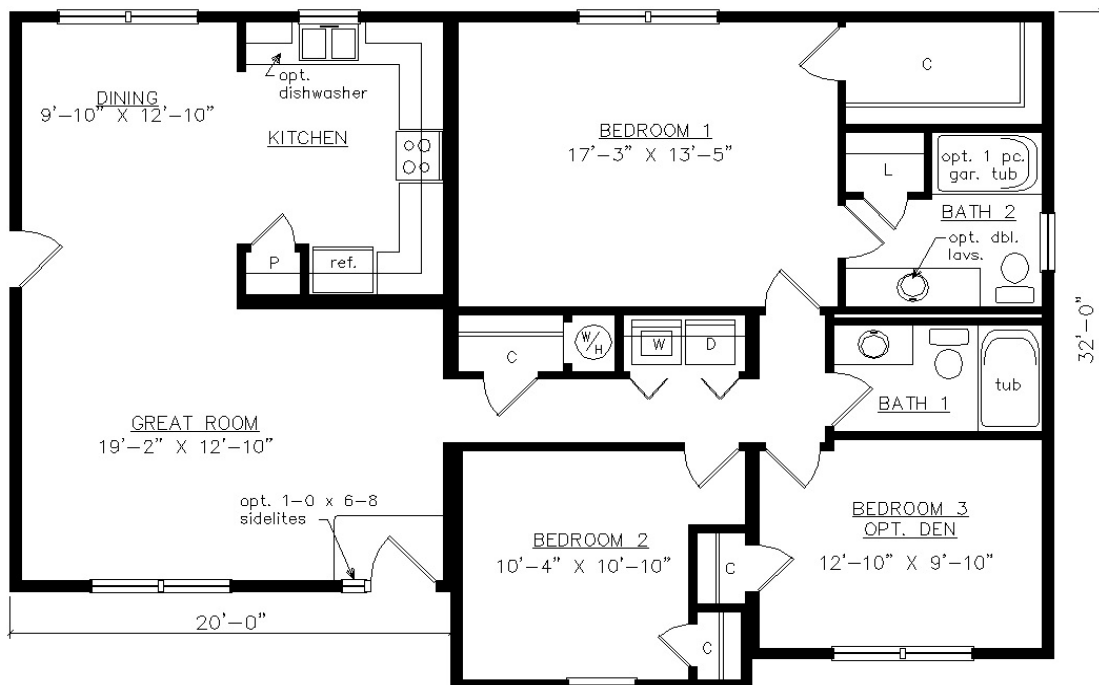


SHOWN WITH OPTIONAL 6" EXTERIOR WALLS

NOTTOWAY



SHOWN WITH OPTIONAL ON-SITE BUILT PORCH, TRIANGLE GABLE VENTS,
FANLITE DOOR AND DOOR SIDELITE
1401 SQ. FT. BEDROOMS: 3 BATHS: 2

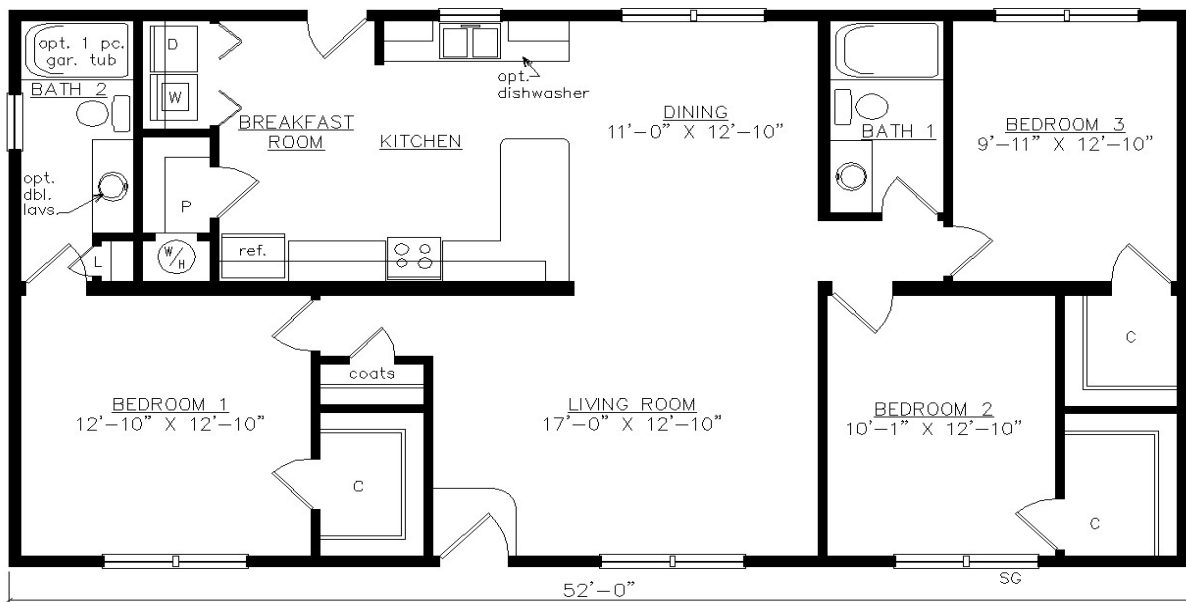


SHOWN WITH OPTIONAL 6" EXTERIOR WALLS

CARLISLE



SHOWN WITH OPTIONAL ON-SITE BUILT GABLE PORCH,
TRIANGLE GABLE VENT AND FANLITE DOOR
1421 SQ. FT. BEDROOMS: 3 BATHS: 2

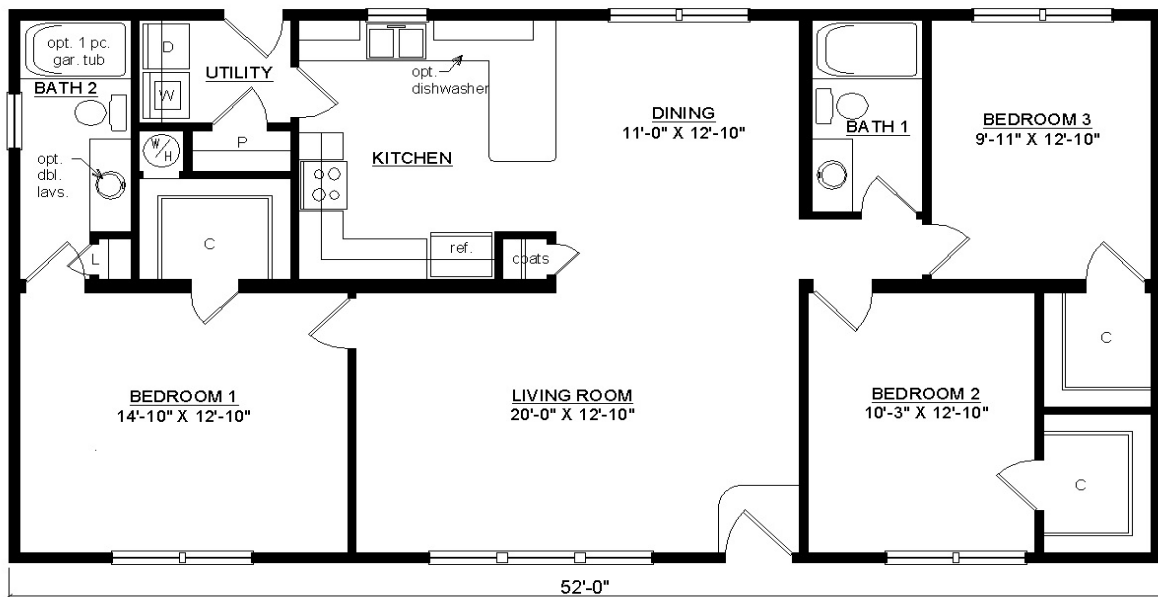


SHOWN WITH OPTIONAL 6" EXTERIOR WALLS

FIFTH AVENUE



SHOWN WITH OPTIONAL ON-SITE GABLE PORCH AND FANLITE DOOR
1421 SQ. FT. BEDROOMS: 3 BATHS: 2



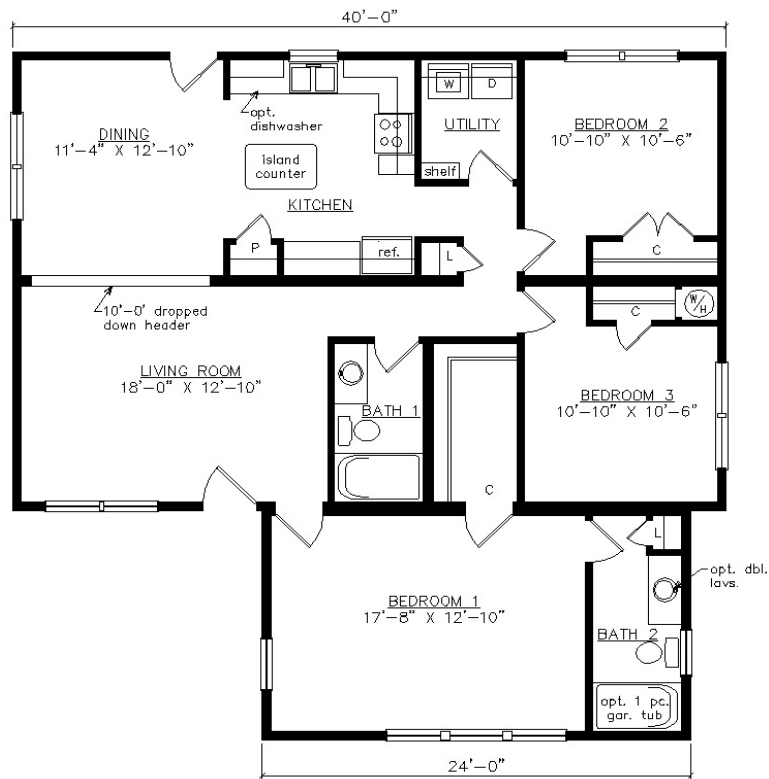
SHOWN WITH OPTIONAL 6" EXTERIOR WALLS

WWW.VIRGINIAHOMESMFG.COM

KINGSTON



SHOWN WITH OPTIONAL ON-SITE BUILT PORCH, TRIANGLE GABLE VENTS, ACCENT SHAKES AND FANLITE DOOR
 1421 SQ. FT. BEDROOMS: 3 BATHS: 2

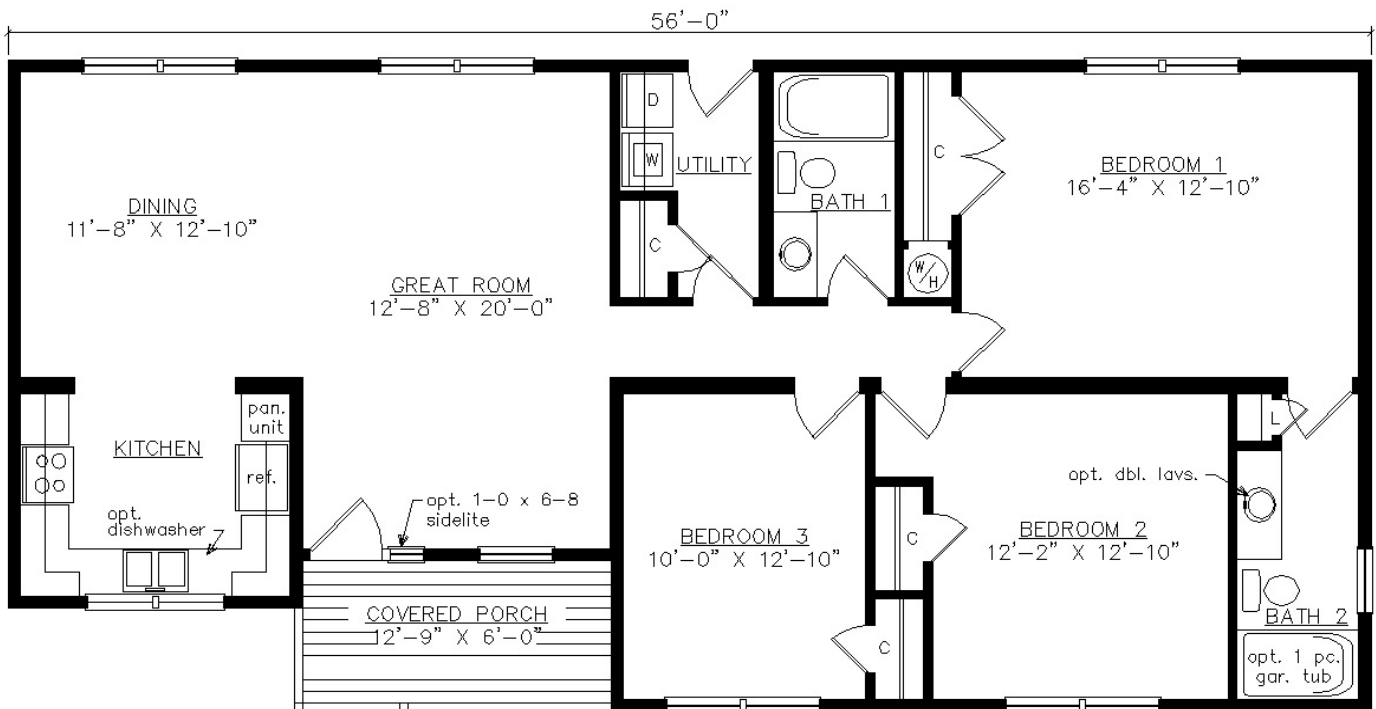


SHOWN WITH OPTIONAL 6" EXTERIOR WALLS

CUMBERLAND



SHOWN WITH OPTIONAL TRIANGLE GABLE VENT,
FANLITE DOOR AND DOOR SIDELITE
1398 SQ. FT. (WITHOUT PORCH) 1480 SQ. FT. (WITH PORCH) BEDROOMS: 3 BATHS: 2



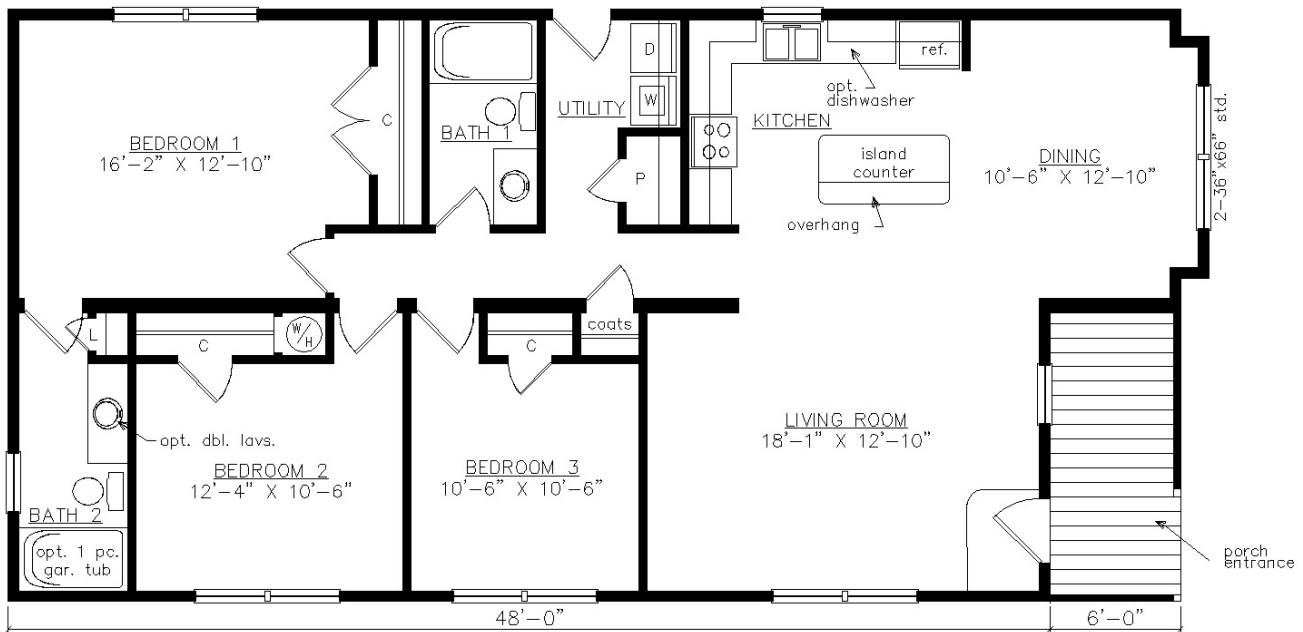
SHOWN WITH OPTIONAL 6" EXTERIOR WALLS

WWW.VIRGINIAHOMESMFG.COM

SANDCASTLE



SHOWN WITH OPTIONAL FANLITE DOOR
 1411 SQ. FT. WITH OUT PORCH 1491 SQ. FT. WITH PORCH BEDROOMS: 3 BATHS: 2



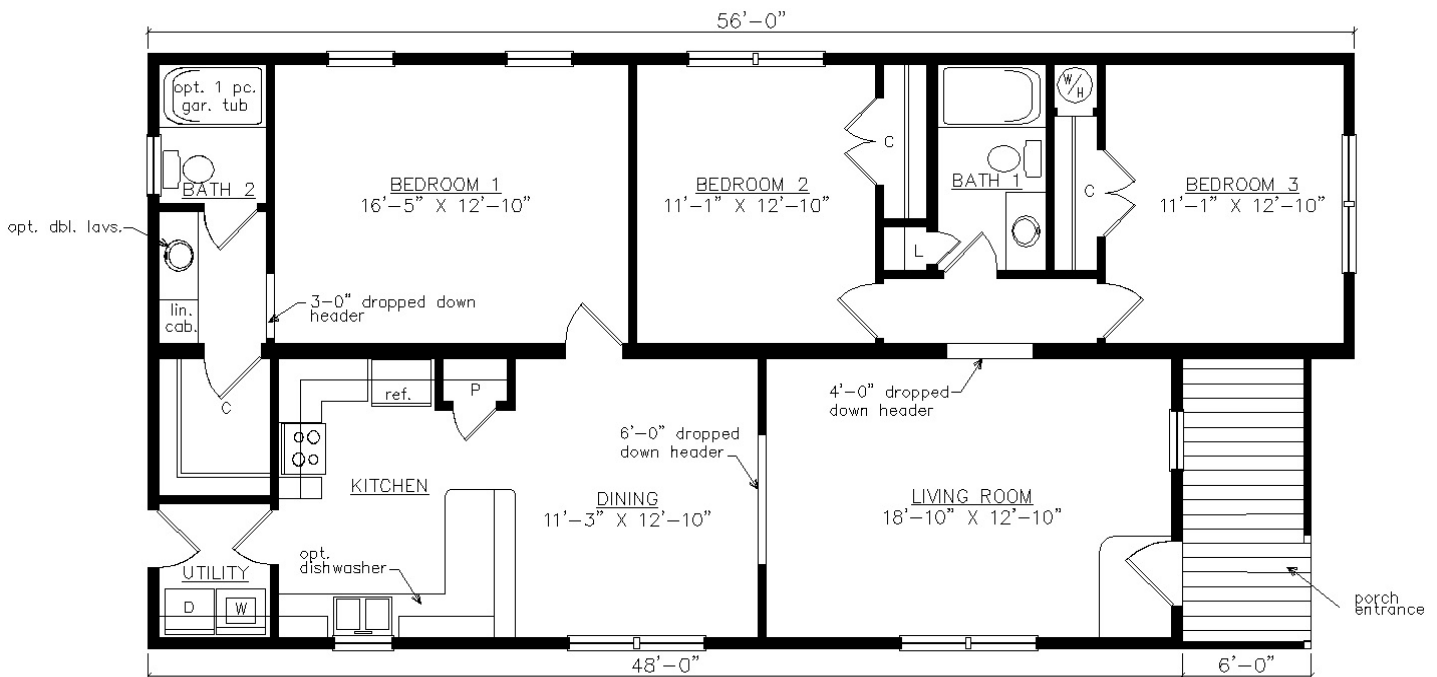
SHOWN WITH OPTIONAL 6" EXTERIOR WALLS

KITTY HAWK



SHOWN WITH OPTIONAL TRIANGLE GABLE VENT
AND FANLITE DOOR

1424 SQ. FT. WITH OUT PORCH 1504 SQ. FT. WITH PORCH BEDROOMS: 3 BATHS: 2

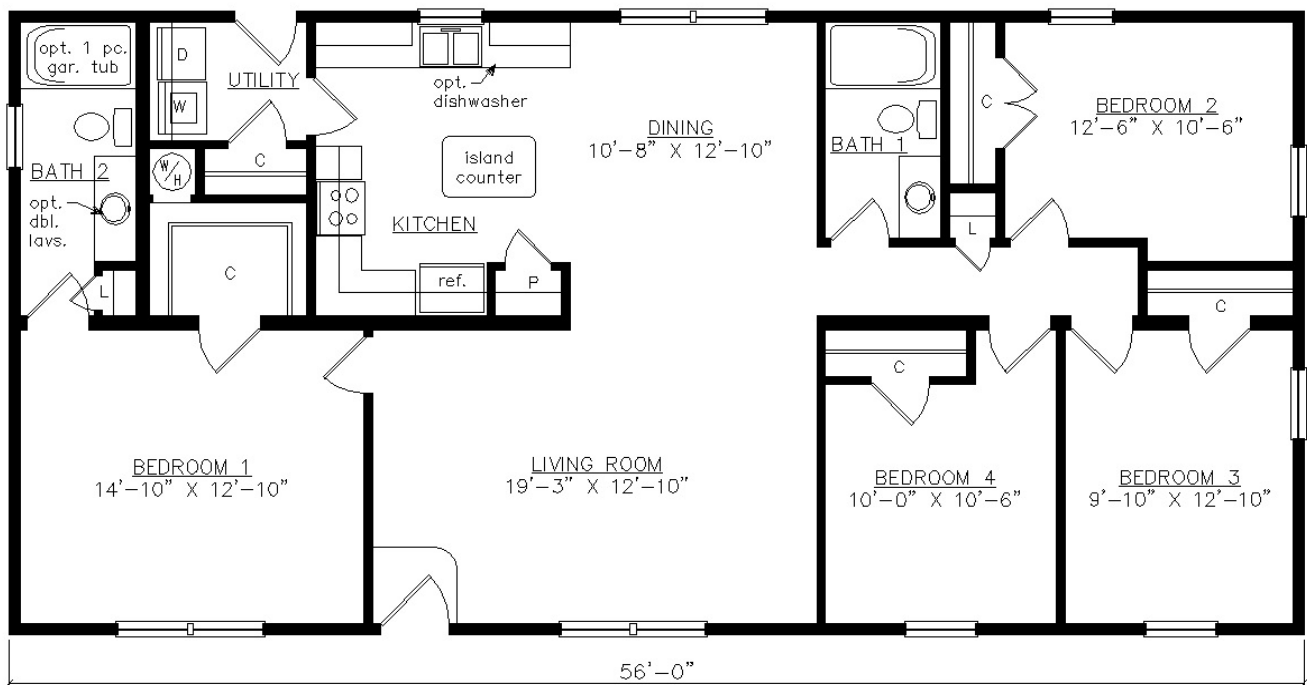


SHOWN WITH OPTIONAL 6" EXTERIOR WALLS

EDGEWOOD



SHOWN WITH OPTIONAL ON-SITE BUILT GABLE PORCH
AND FANLITE DOOR
1531 SQ. FT. BEDROOMS: 4 BATHS: 2

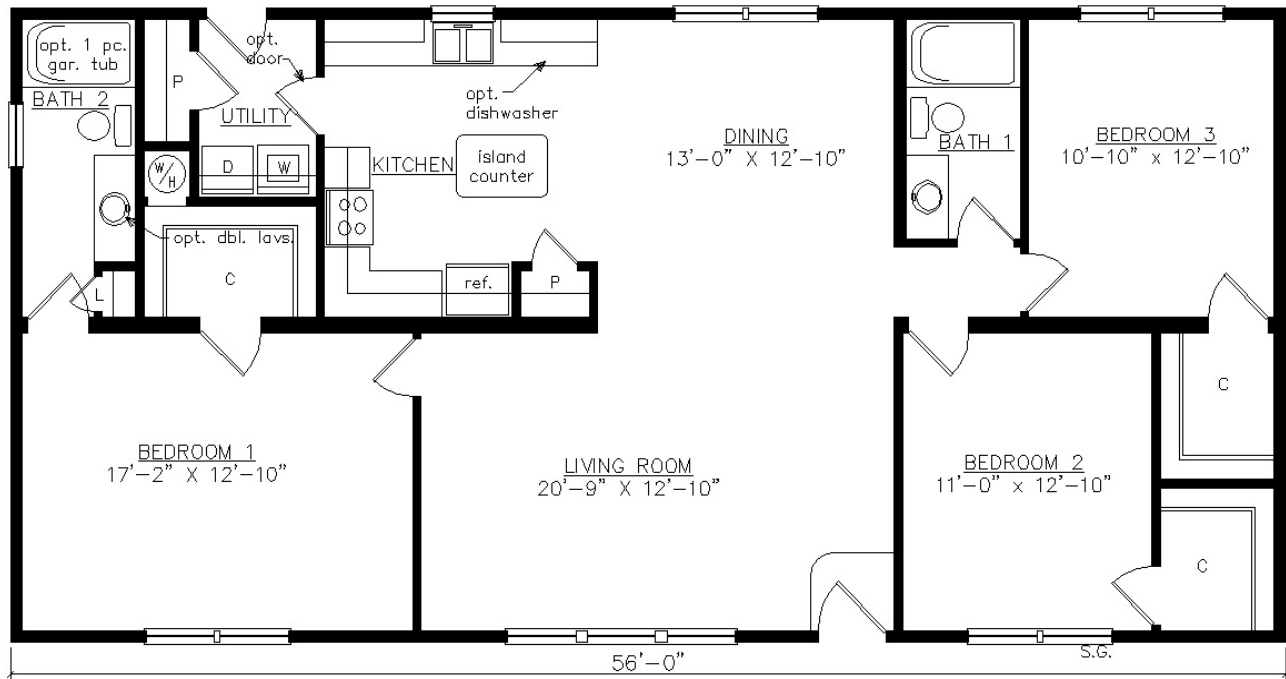


SHOWN WITH OPTIONAL 6" EXTERIOR WALLS

TIMBERLAKE



SHOWN WITH OPTIONAL GABLE VALLEY SET ROOF
AND FANLITE DOOR
1531 SQ. FT. BEDROOMS: 3 BATHS: 2

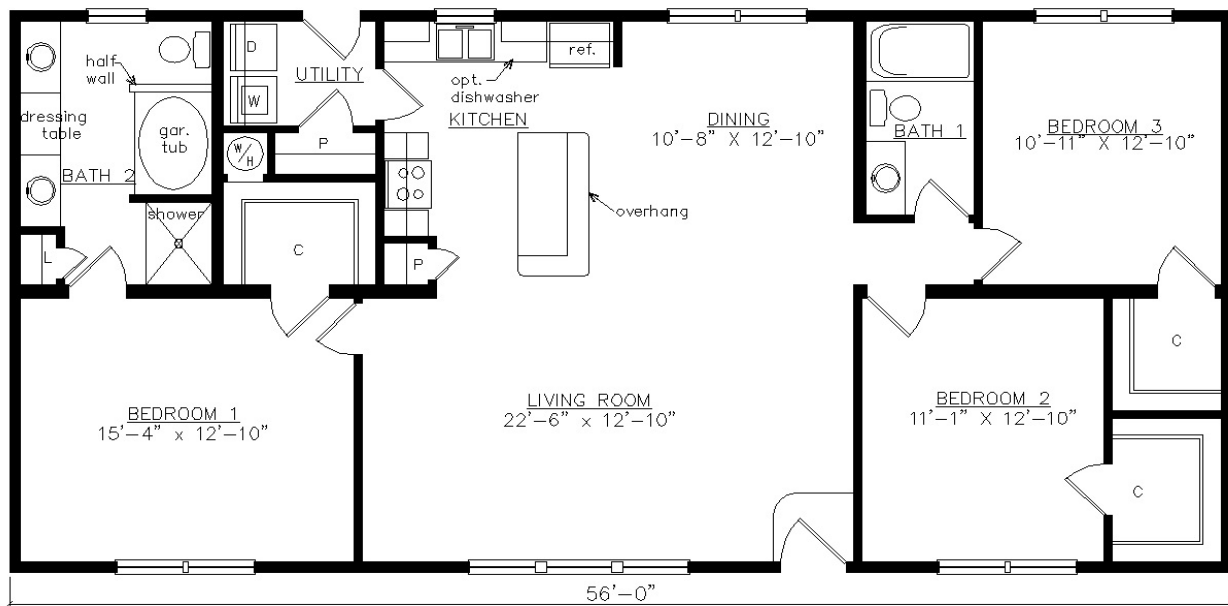


SHOWN WITH OPTIONAL 6" EXTERIOR WALLS

PINEWOOD



SHOWN WITH OPTIONAL ON-SITE BUILT GABLE PORCH
AND FANLITE DOOR
1531 SQ. FT. BEDROOMS: 3 BATHS: 2



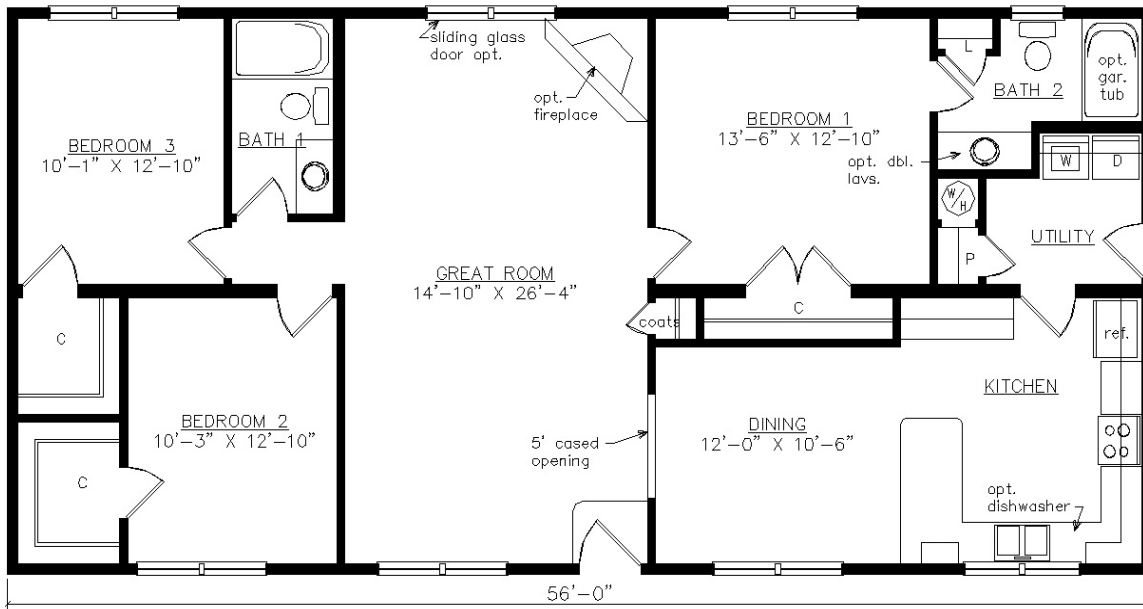
SHOWN WITH OPTIONAL 6" EXTERIOR WALLS

WWW.VIRGINIAHOMESMFG.COM

HYATT



SHOWN WITH OPTIONAL ON-SITE BUILT RAISED
ROOF PORCH AND FANLITE DOOR
1531 SQ. FT. BEDROOMS: 3 BATHS: 2

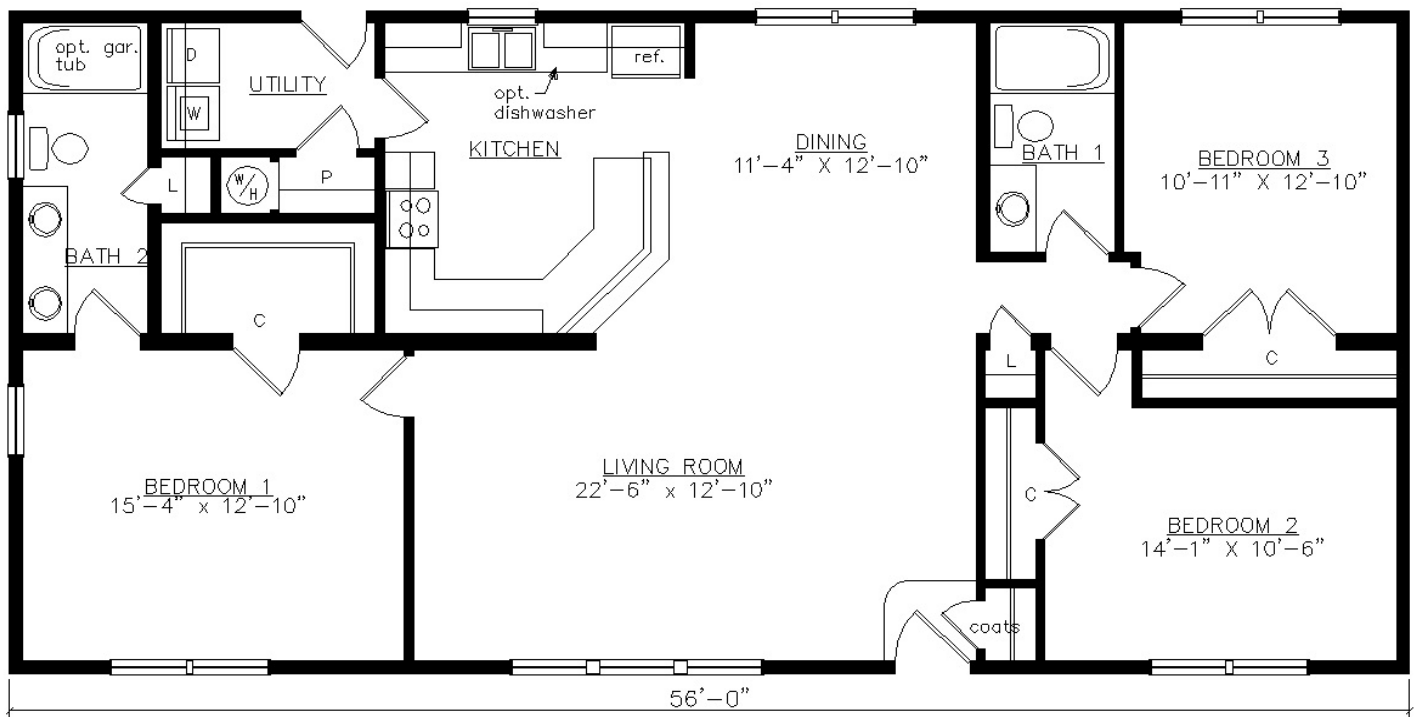


SHOWN WITH OPTIONAL 6" EXTERIOR WALLS

BUCKINGHAM



SHOWN WITH OPTIONAL ON-SITE BUILT GABLE PORCH, TRIANGLE GABLE VENT,
CRAFTSMAN WINDOWS AND CRAFTSMAN DOOR
1531 SQ. FT. BEDROOMS: 3 BATHS: 2



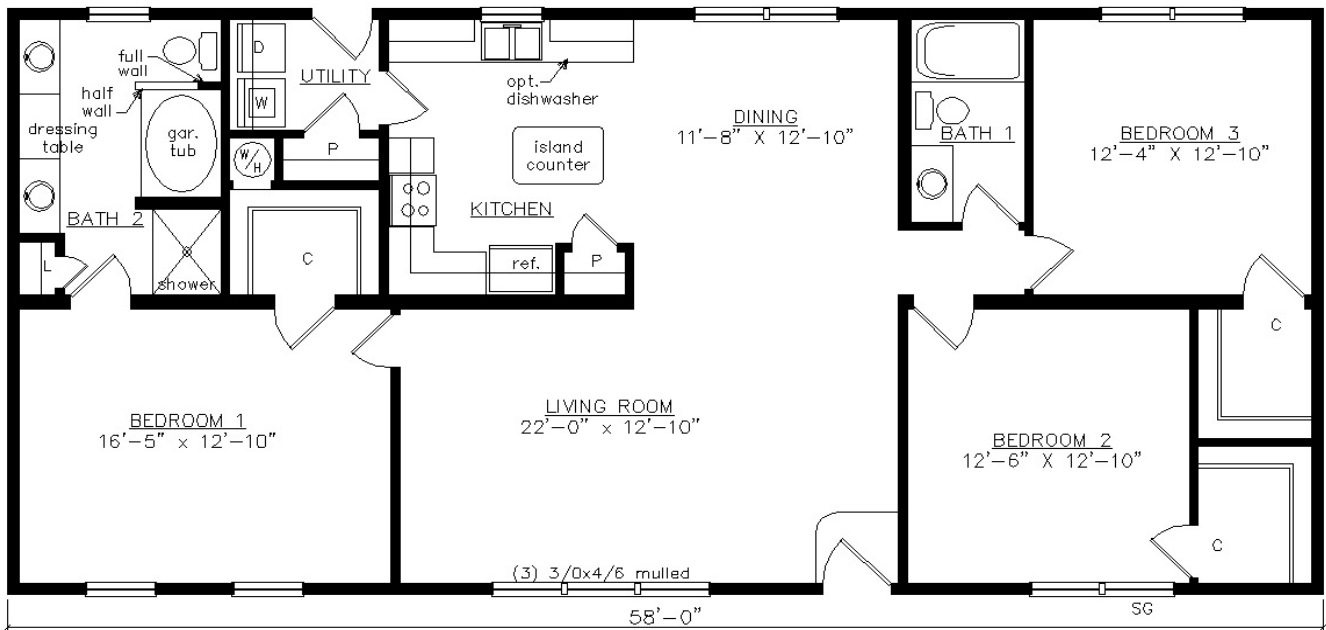
SHOWN WITH OPTIONAL 6" EXTERIOR WALLS

WWW.VIRGINIAHOMESMFG.COM

NEW KENT



SHOWN WITH OPTIONAL ON-SITE BUILT PORCH, RAISED ROOF,
CRAFTSMAN WINDOWS AND CRAFTSMAN DOOR
1585 SQ. FT. BEDROOMS: 3 BATHS: 2



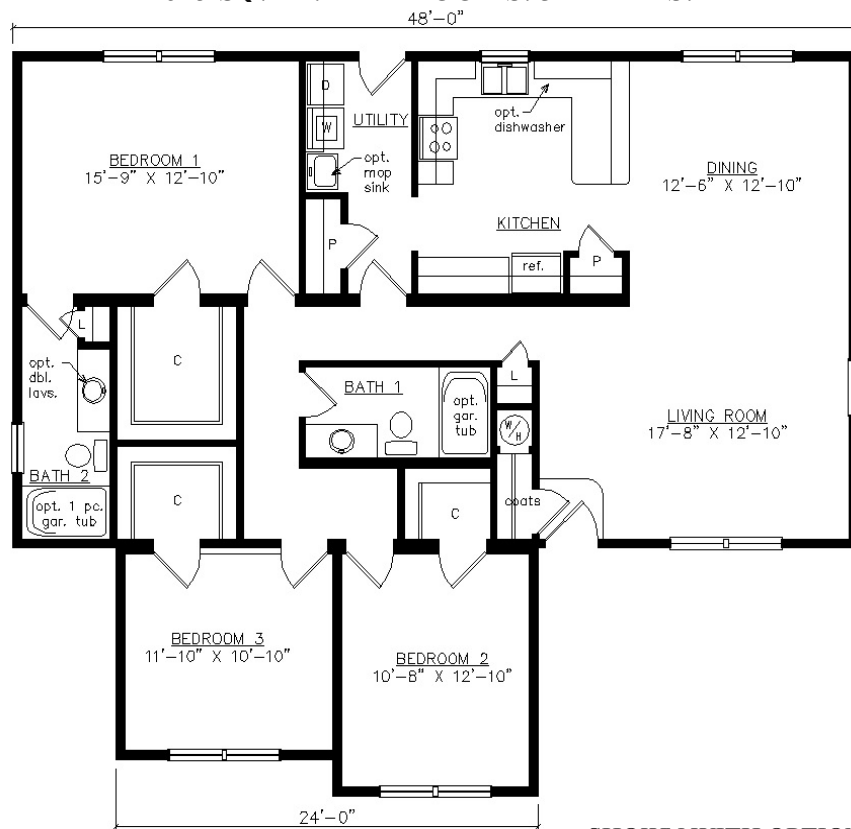
SHOWN WITH OPTIONAL 6" EXTERIOR WALLS

WWW.VIRGINIAHOMESMFG.COM

ASHLAND



SHOWN WITH OPTIONAL ON-SITE BUILT PORCH
AND FANLITE DOOR
1615 SQ. FT. BEDROOMS: 3 BATHS: 2

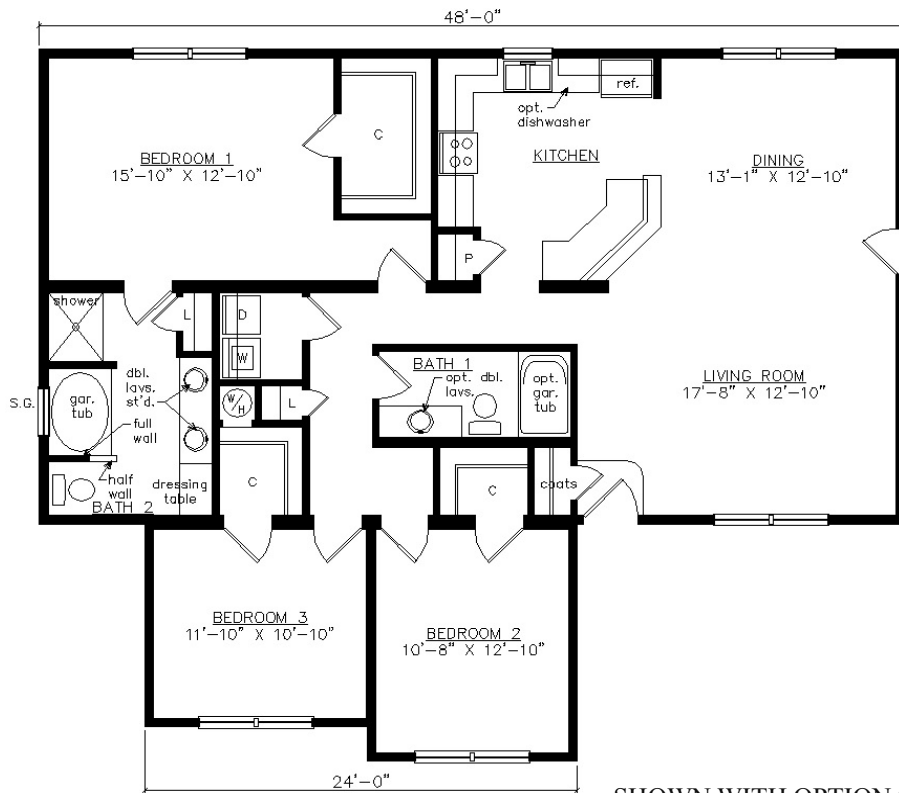


SHOWN WITH OPTIONAL 6" EXTERIOR WALLS

ASHLAND I



SHOWN WITH OPTIONAL ON-SITE BUILT PORCH
AND FANLITE DOOR
1615 SQ. FT. BEDROOMS: 3 BATHS: 2

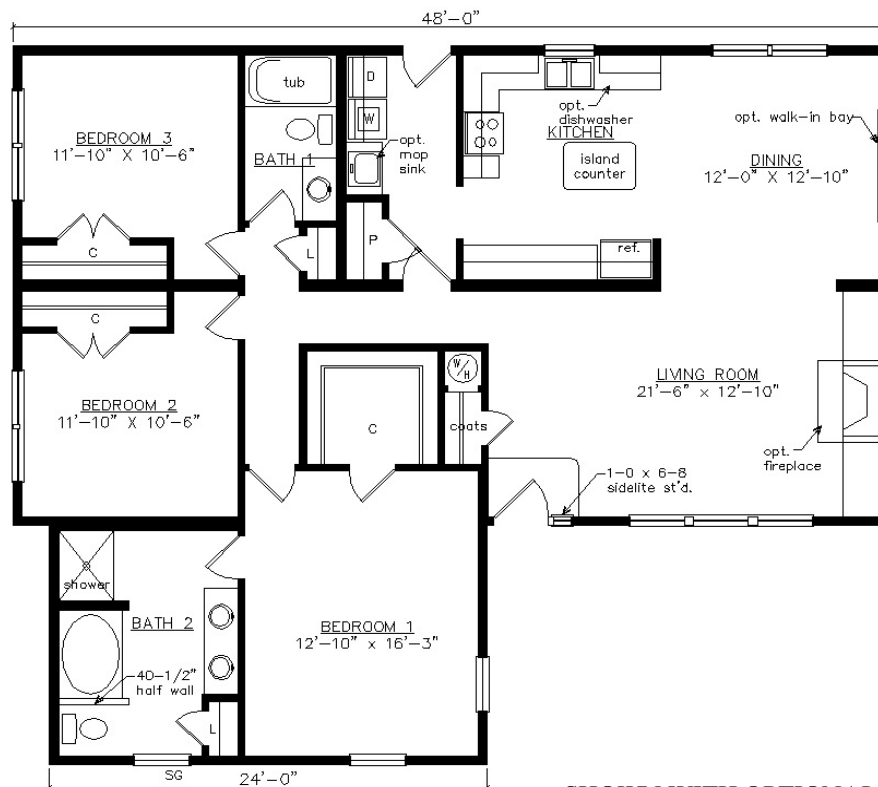


SHOWN WITH OPTIONAL 6" EXTERIOR WALLS

ROANOKE



SHOWN WITH OPTIONAL ON-SITE BUILT PORCH, TRIANGLE GABLE VENT,
FANLITE DOOR, DOOR SIDELITE AND ACCENT SHAKES
1640 SQ. FT. BEDROOMS: 3 BATHS: 2

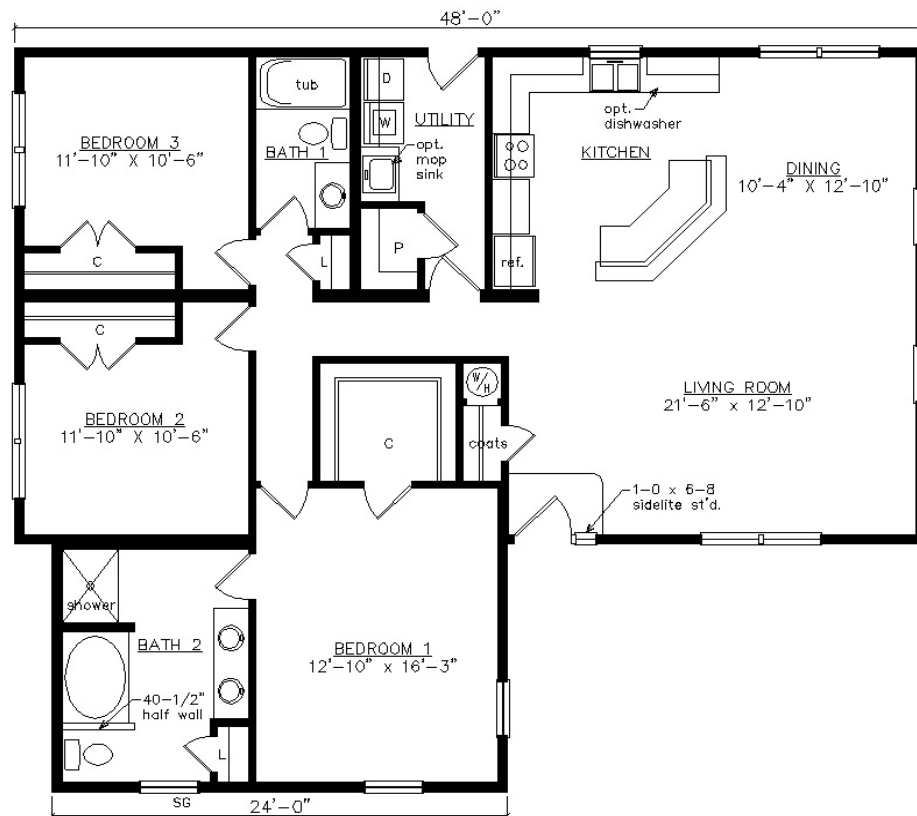


SHOWN WITH OPTIONAL 6" EXTERIOR WALLS

ROANOKE OPEN



SHOWN WITH OPTIONAL ON-SITE BUILT PORCH, TRIANGLE GABLE VENT, FANLITE DOOR, DOOR SIDELITE AND ACCENT SHAKES
1640 SQ. FT. BEDROOMS: 3 BATHS: 2

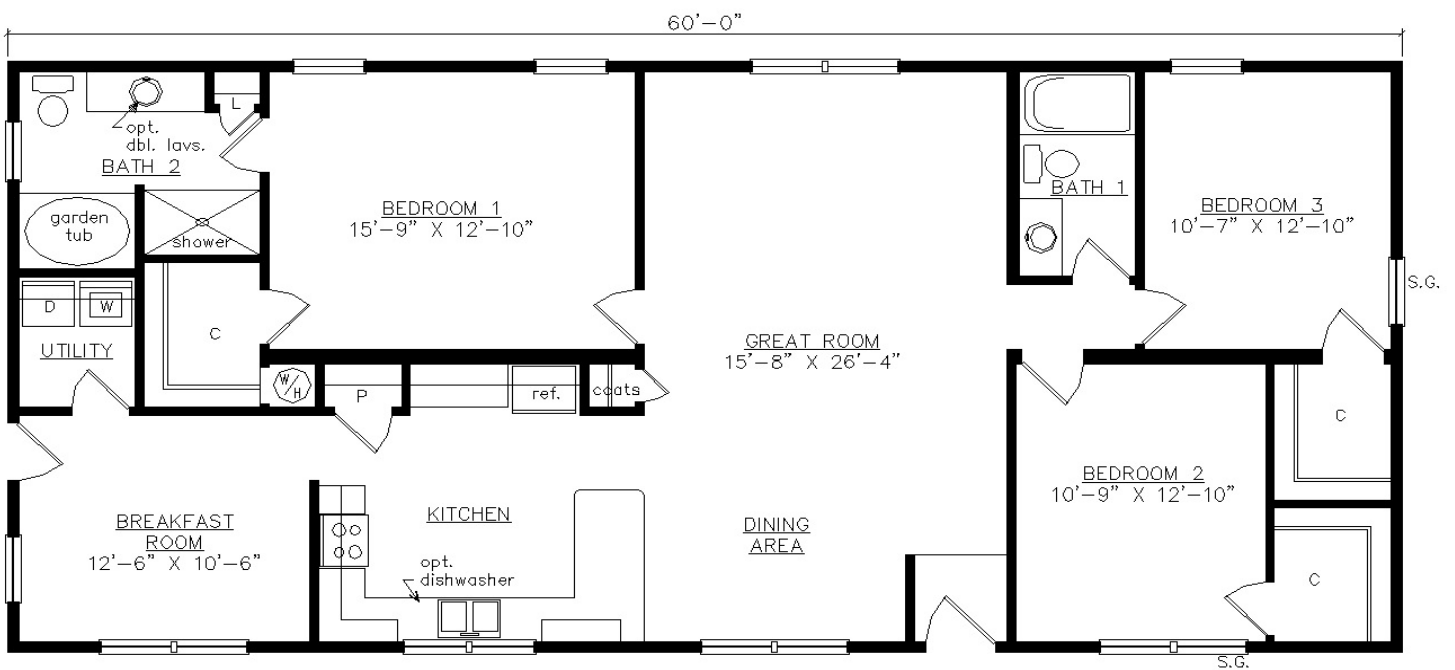


SHOWN WITH OPTIONAL 6" EXTERIOR WALLS

STRATFORD



SHOWN WITH OPTIONAL RAISED ROOF ON-SITE BUILT PORCH
AND FANLITE DOOR
1640 SQ. FT. BEDROOMS: 3 BATHS: 2

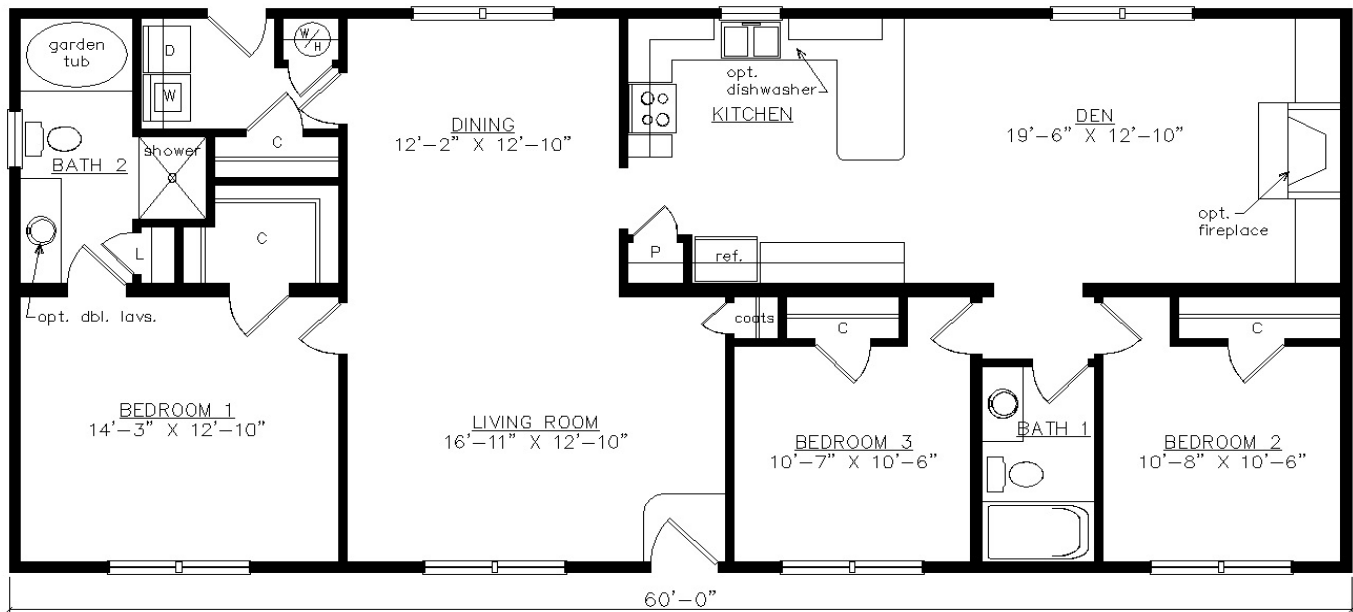


SHOWN WITH OPTIONAL 6" EXTERIOR WALLS

MAYFIELD



SHOWN WITH OPTIONAL ON-SITE BUILT GABLE PORCH
AND FANLITE DOOR
1640 SQ. FT. BEDROOMS: 3 BATHS: 2



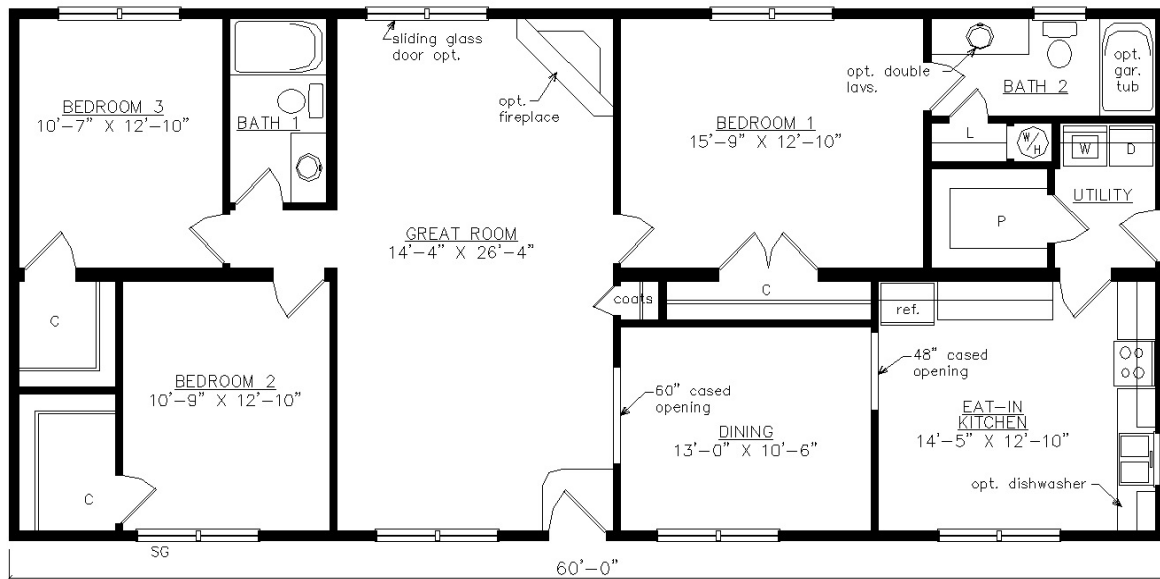
SHOWN WITH OPTIONAL 6" EXTERIOR WALLS

WWW.VIRGINIAHOMESMFG.COM

HYATT I



SHOWN WITH OPTIONAL ON-SITE BUILT GABLE PORCH
AND FANLITE DOOR
1640 SQ. FT. BEDROOMS: 3 BATHS: 2

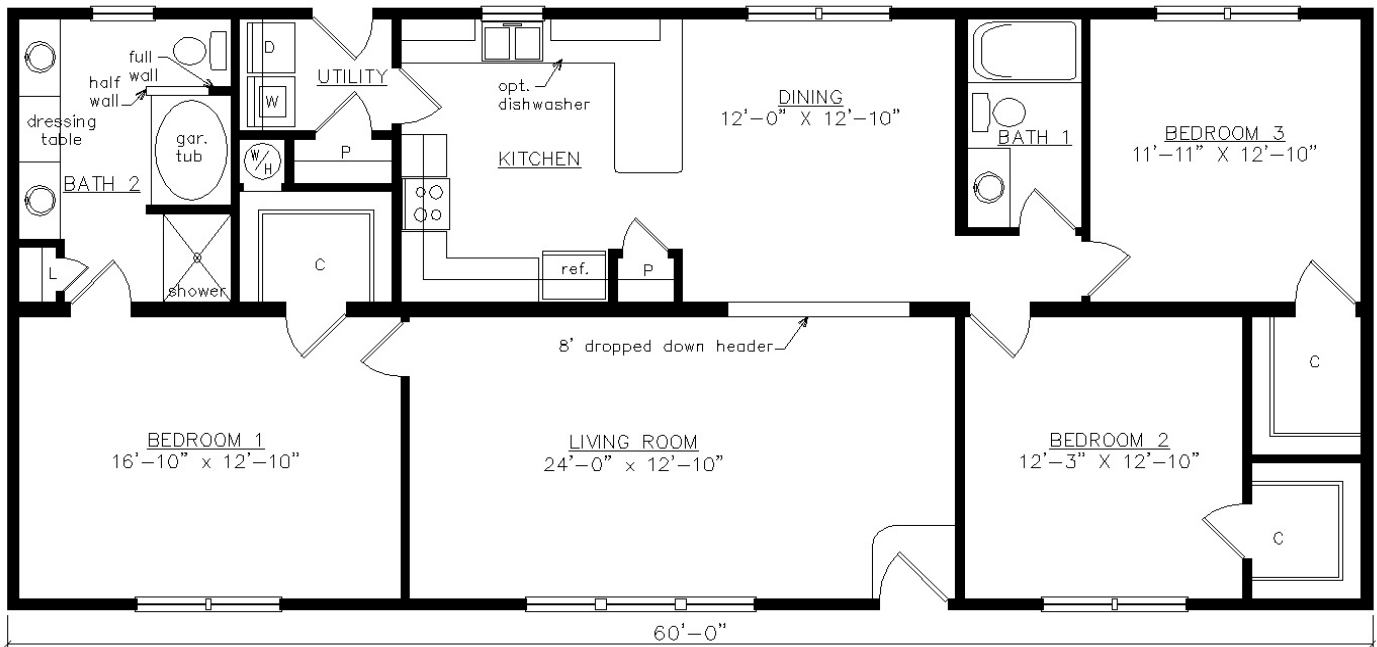


SHOWN WITH OPTIONAL 6" EXTERIOR WALLS

PARK AVENUE



SHOWN WITH OPTIONAL ON-SITE BUILT GABLE PORCH
AND FANLITE DOOR
1640 SQ. FT. BEDROOMS: 3 BATHS: 2

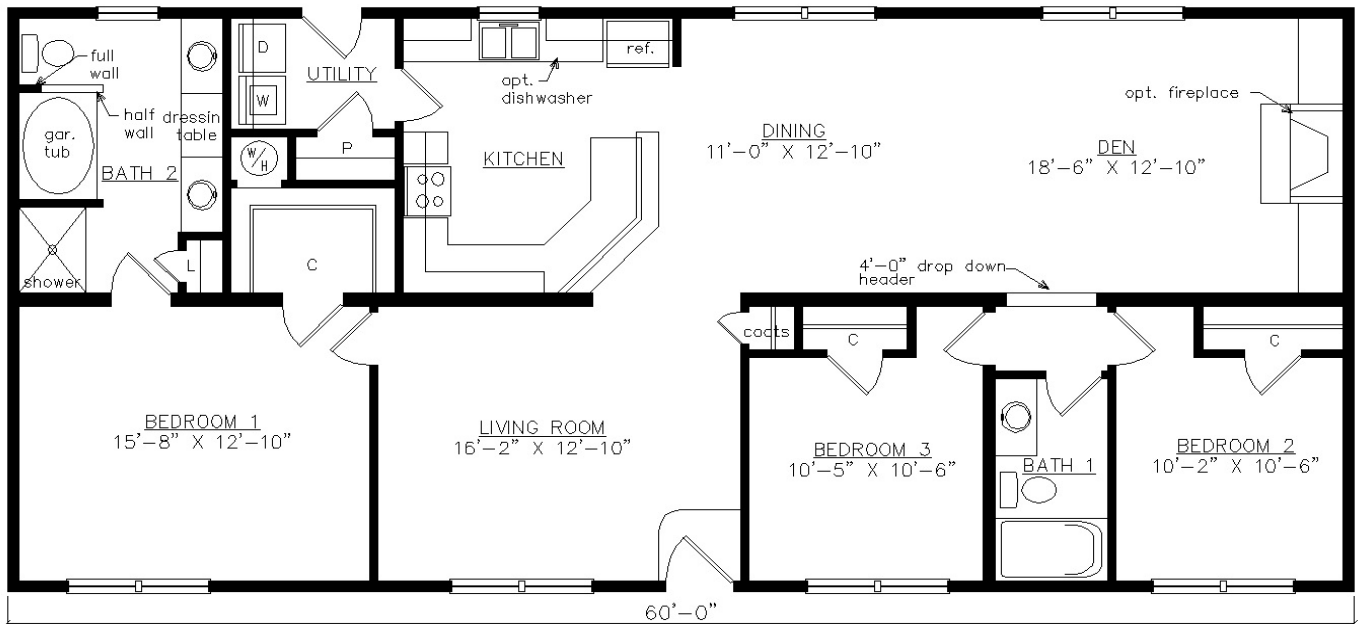


SHOWN WITH OPTIONAL 6" EXTERIOR WALLS

BRISTOL



SHOWN WITH OPTIONAL ON-SITE BUILT RAISED PORCH
AND FANLITE DOOR
1640 SQ. FT. BEDROOMS: 3 BATHS: 2

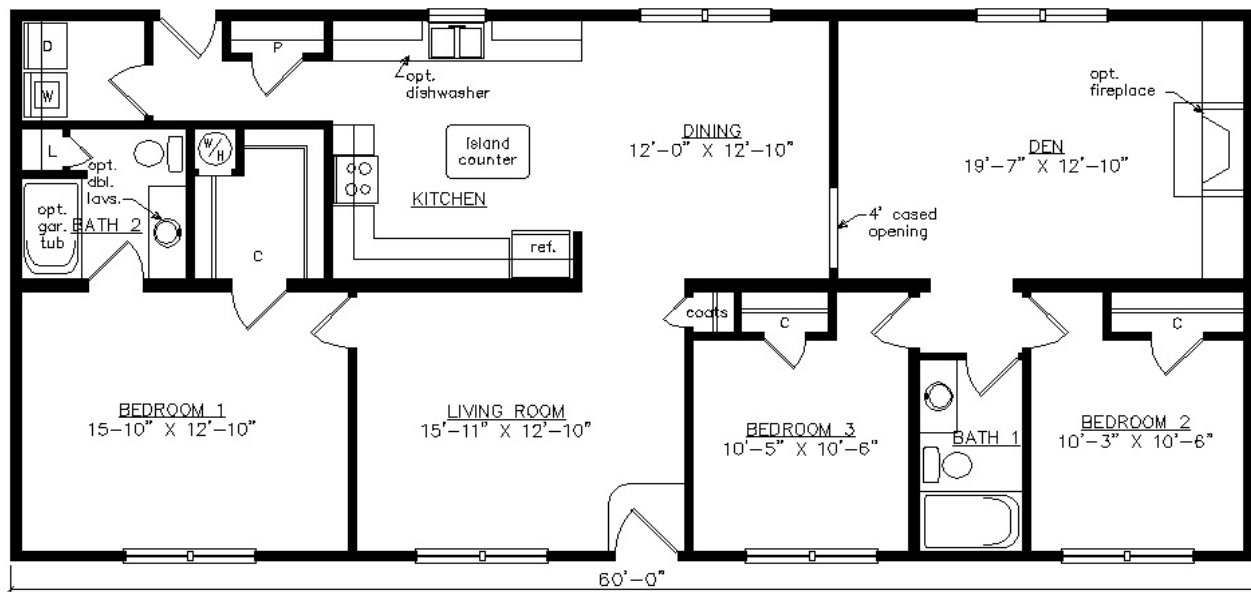


SHOWN WITH OPTIONAL 6" EXTERIOR WALLS

RADISSON IV



SHOWN WITH OPTIONAL ON-SITE BUILT GABLE PORCH
AND FANLITE DOOR
1640 SQ. FT. BEDROOMS: 3 BATHS: 2

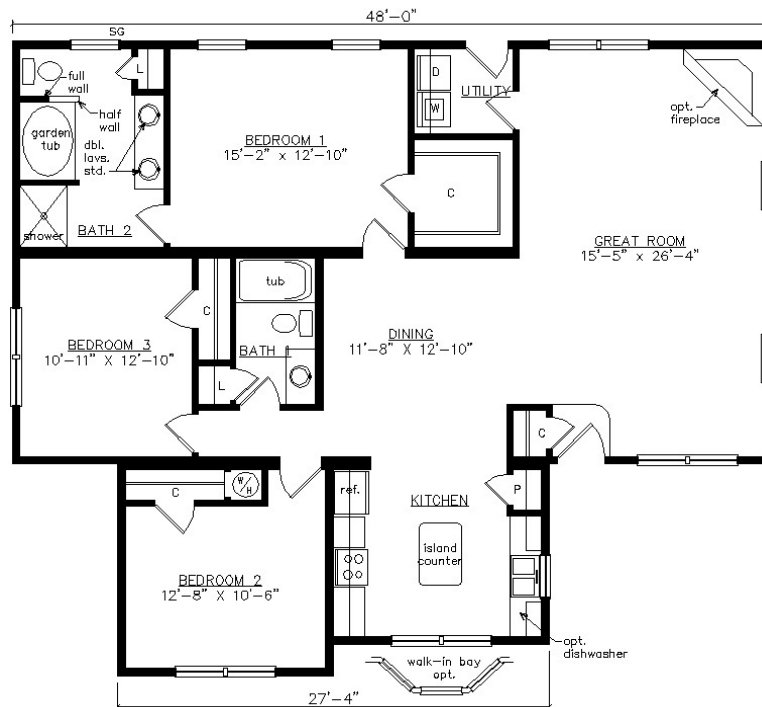


SHOWN WITH OPTIONAL 6" EXTERIOR WALLS

GREENVILLE



SHOWN WITH OPTIONAL ON-SITE BUILT PORCH,
TRIANGLE GABLE VENT, FANLITE DOOR AND ACCENT SHAKES
1658 SQ. FT. BEDROOMS: 3 BATHS: 2

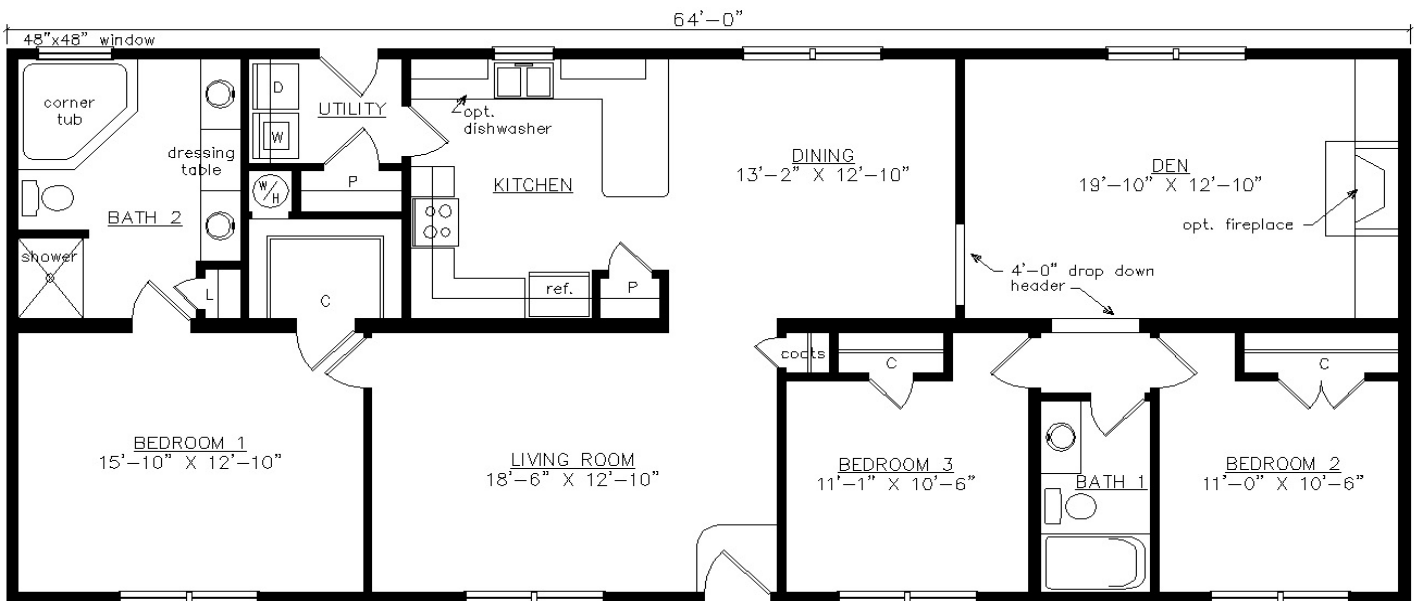


SHOWN WITH OPTIONAL 6" EXTERIOR WALLS

BRANTLEY



SHOWN WITH OPTIONAL ON-SITE RAISED ROOF PORCH
AND FANLITE DOOR
1749 SQ. FT. BEDROOMS: 3 BATHS: 2

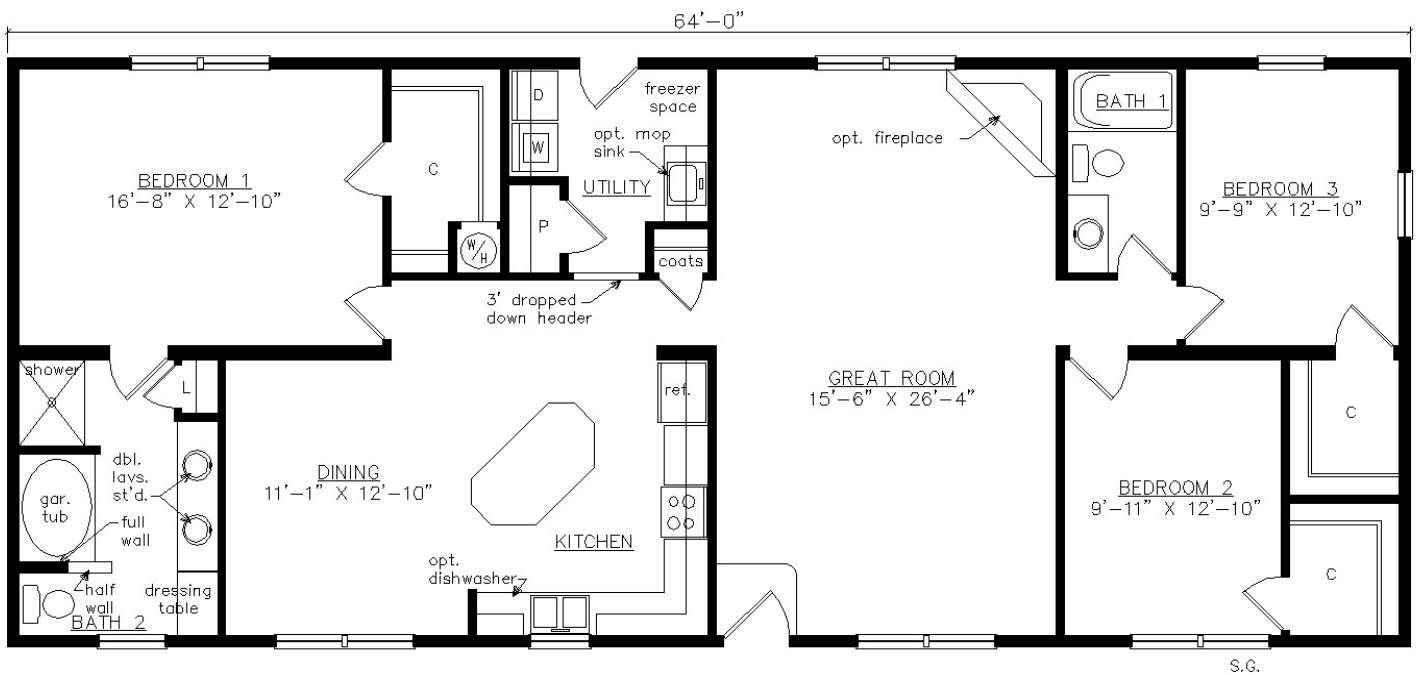


SHOWN WITH OPTIONAL 6" EXTERIOR WALLS

KENSINGTON



SHOWN WITH OPTIONAL ON-SITE GABLE PORCH
AND FANLITE DOOR
1749 SQ. FT. BEDROOMS: 3 BATHS: 2

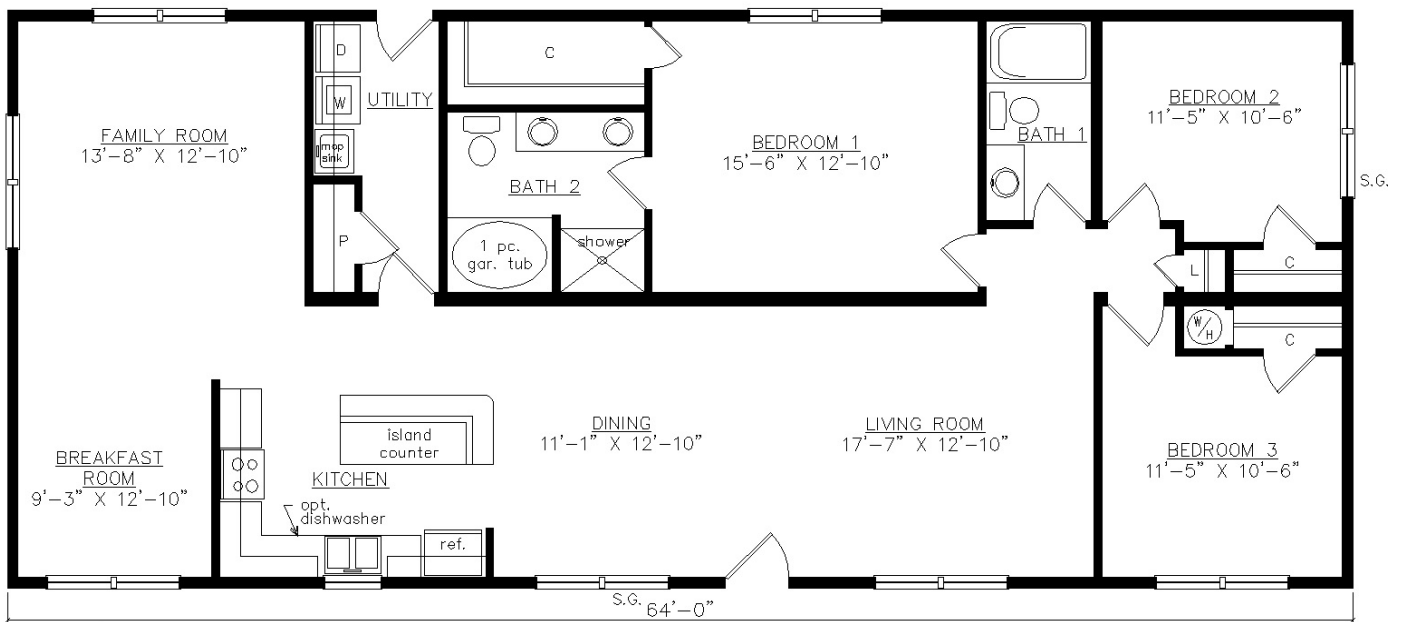


SHOWN WITH OPTIONAL 6" EXTERIOR WALLS

ALAMANCE



SHOWN WITH OPTIONAL ON-SITE GABLE PORCH
AND FANLITE DOOR
1749 SQ. FT. BEDROOMS: 3 BATHS: 2

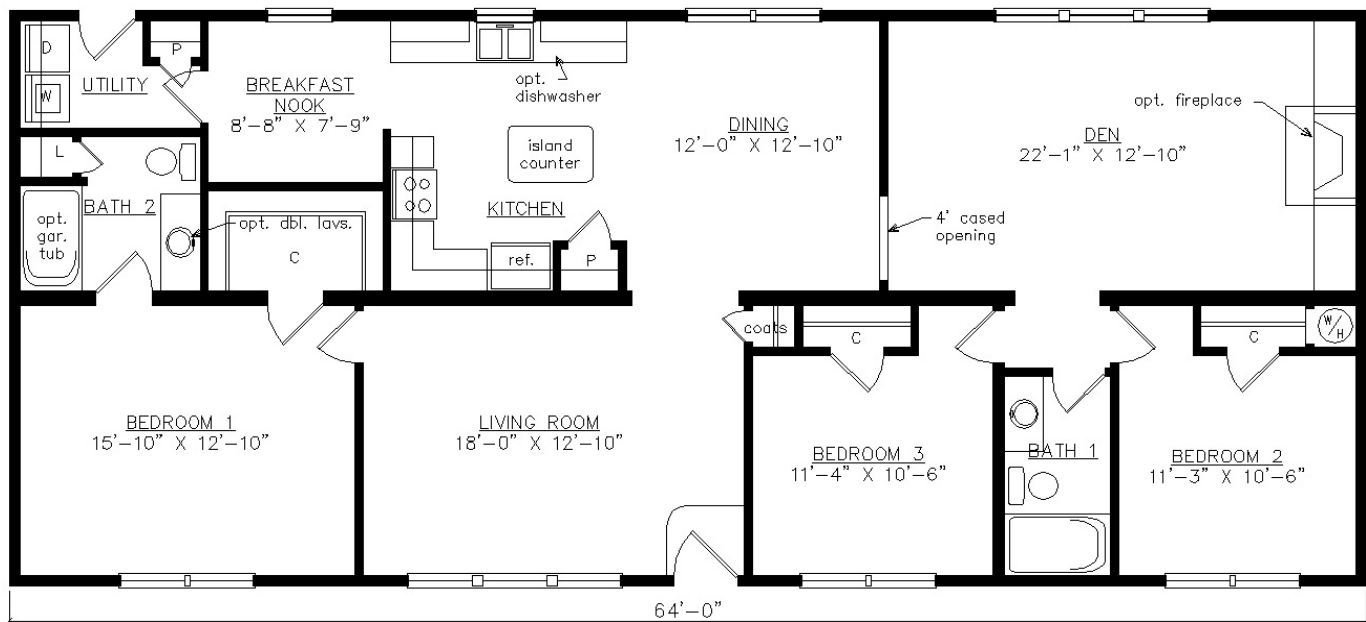


SHOWN WITH OPTIONAL 6" EXTERIOR WALLS

RADDISSON



SHOWN WITH OPTIONAL ON-SITE GABLE PORCH
AND FANLITE DOOR
1749 SQ. FT. BEDROOMS: 3 BATHS: 2

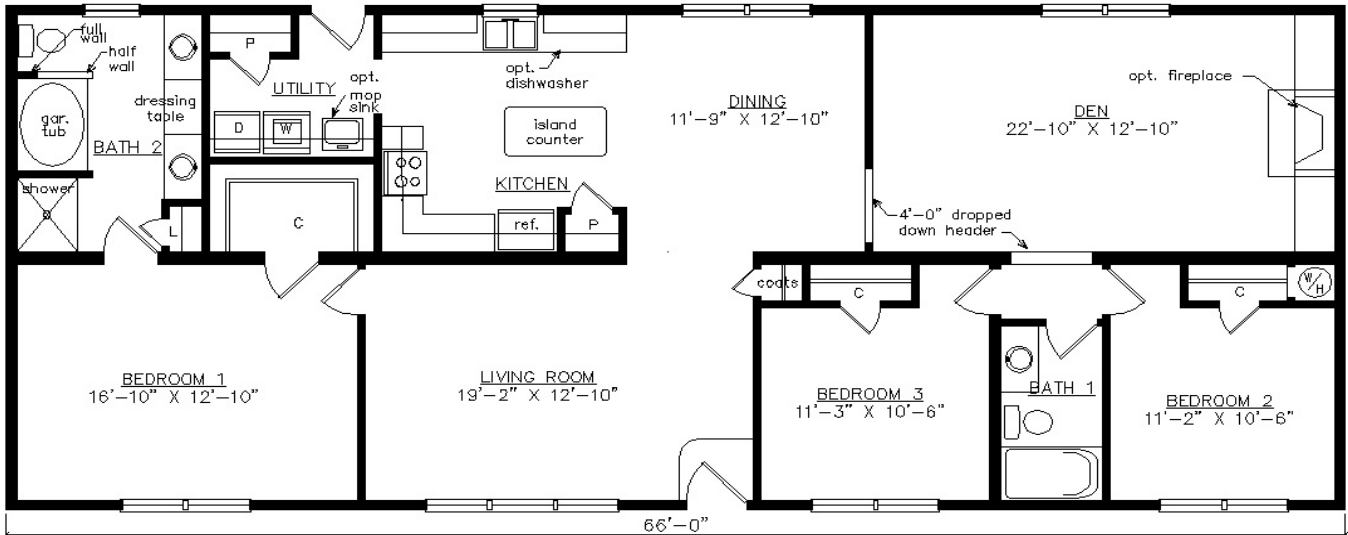


SHOWN WITH OPTIONAL 6" EXTERIOR WALLS

COVINGTON



SHOWN WITH OPTIONAL ON-SITE BUILT GABLE PORCH
AND FANLITE DOOR
1804 SQ. FT. BEDROOMS: 3 BATHS: 2

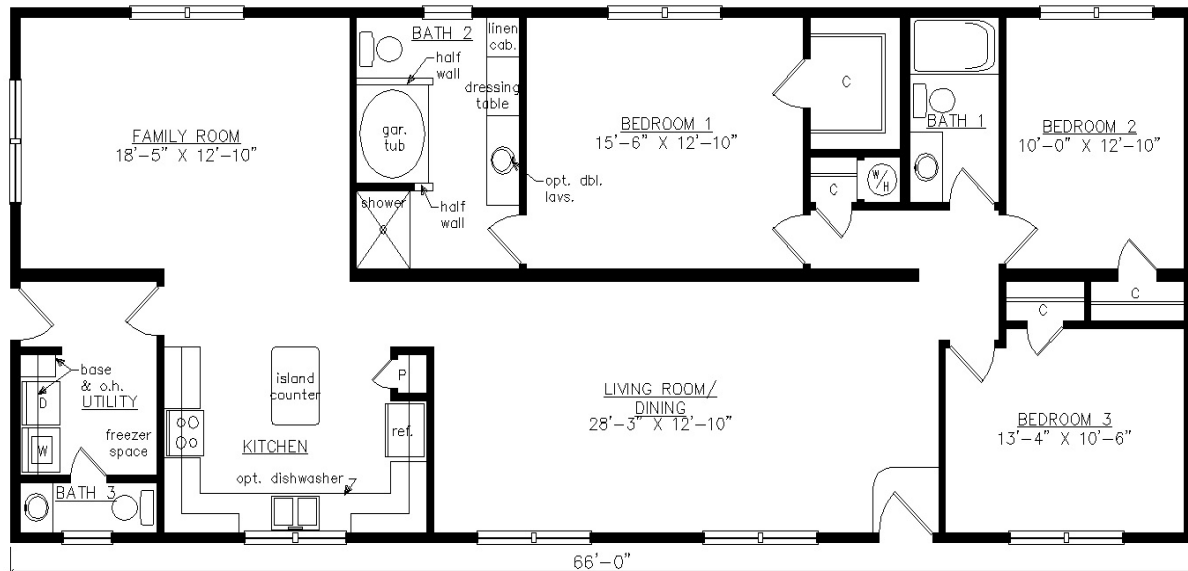


SHOWN WITH OPTIONAL 6" EXTERIOR WALLS

OAKS



SHOWN WITH OPTIONAL ON-SITE BUILT RAISED ROOF PORCH
AND FANLITE DOOR
1804 SQ. FT. BEDROOMS: 3 BATHS: 2.5

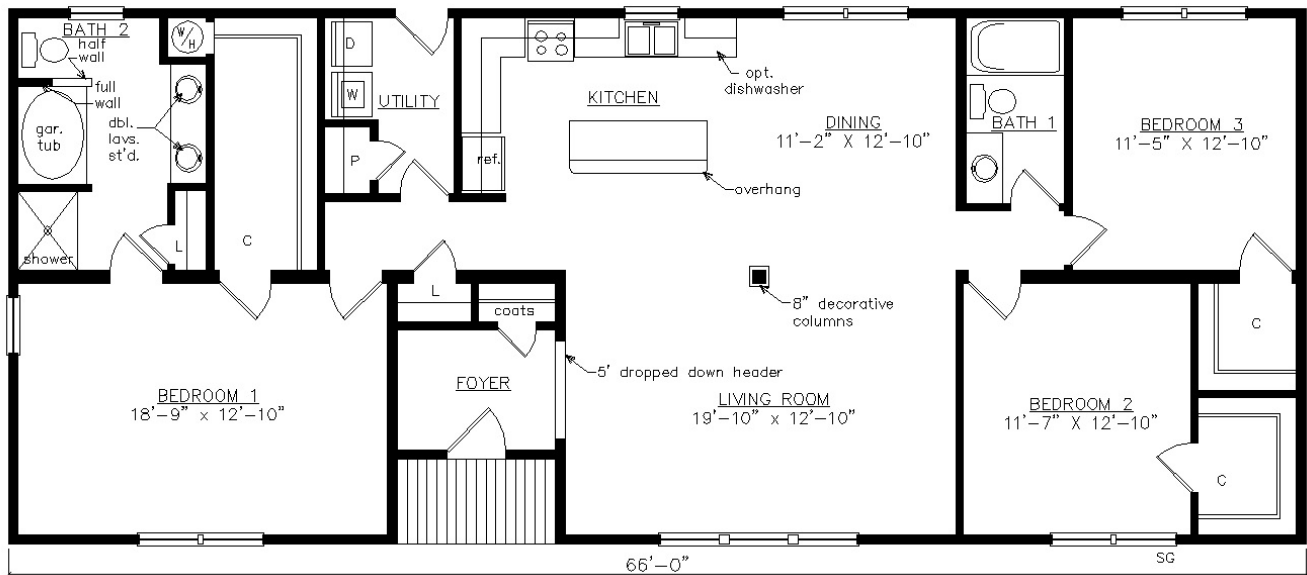


SHOWN WITH OPTIONAL 6" EXTERIOR WALLS

LUNENBURG



SHOWN WITH OPTIONAL GABLE VALLEY SET,
 TRIANGLE GABLE VENT AND FANLITE DOOR
 1769 SQ. FT. (WITHOUT PORCH) 1804 SQ. FT. (WITH PORCH) BEDROOMS: 3 BATHS: 2

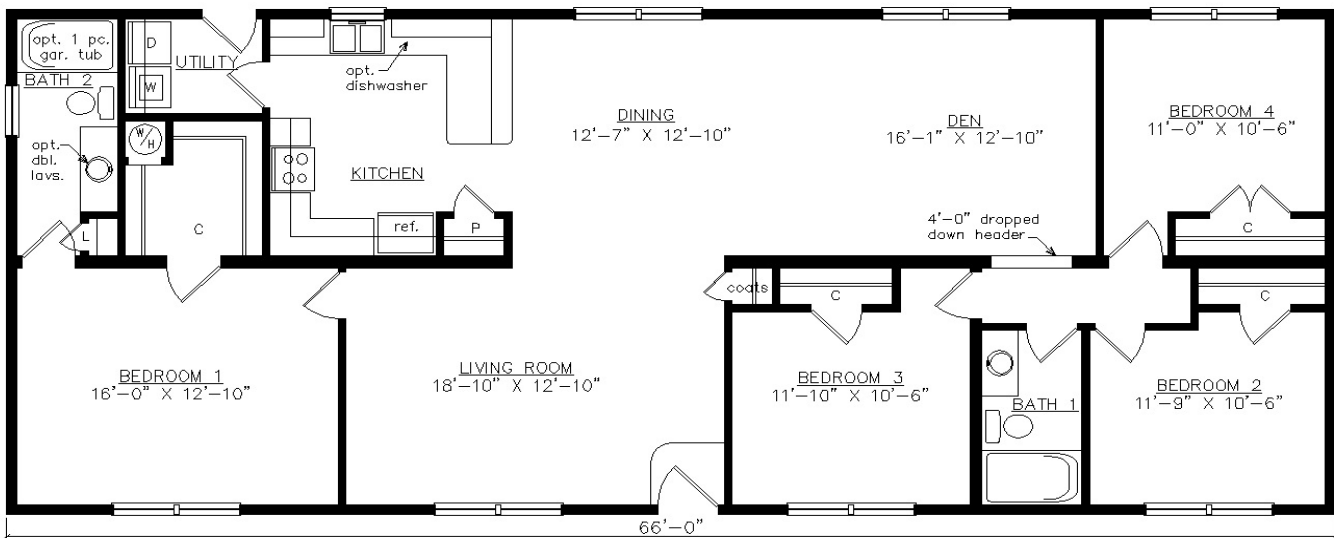


SHOWN WITH OPTIONAL 6" EXTERIOR WALLS

RADISSON VI



SHOWN WITH OPTIONAL ON-SITE BUILT
SHED PORCH AND FANLITE DOOR
1804 SQ. FT. BEDROOMS: 4 BATHS: 2

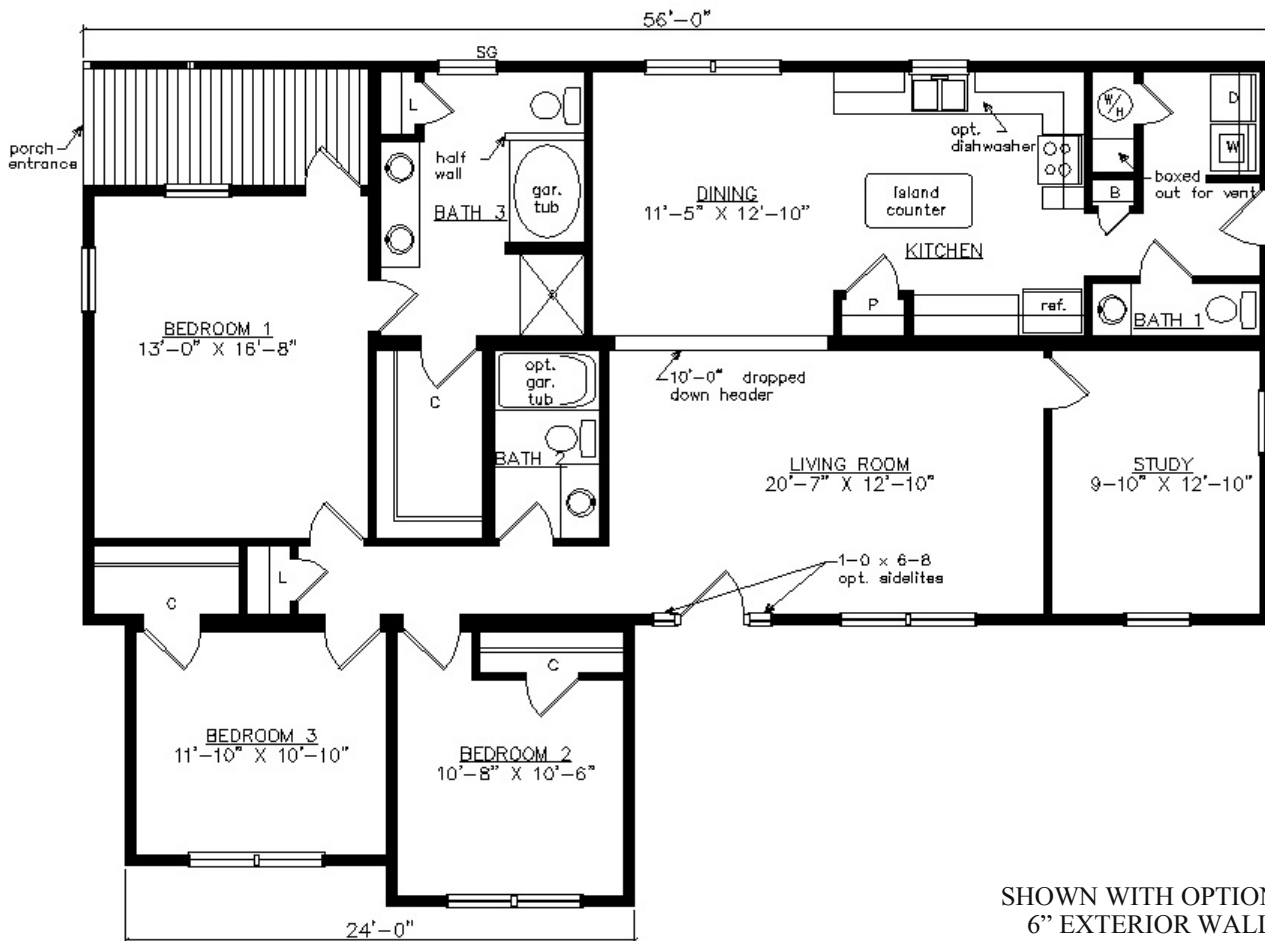


SHOWN WITH OPTIONAL 6" EXTERIOR WALLS

PRINCE GEORGE



SHOWN WITH OPTIONAL ON-SITE BUILT PORCH,
 TRIANGLE GABLE VENT, FANLITE DOOR AND DOOR SIDELITES
 1752 SQ. FT. (WITHOUT PORCH) 1834 SQ. FT. (WITH PORCH) BEDROOMS: 3 BATHS: 2.5



SHOWN WITH OPTIONAL
 6" EXTERIOR WALLS

GRANVILLE



SHOWN WITH OPTIONAL TRIANGLE GABLE VENTS, ACCENT SHAKES,
FANLITE DOOR AND DOOR SIDELITES
1777 SQ.FT. (WITHOUT PORCH) 1850 SQ. FT. (WITH PORCH) BEDROOMS: 3 BATHS: 2

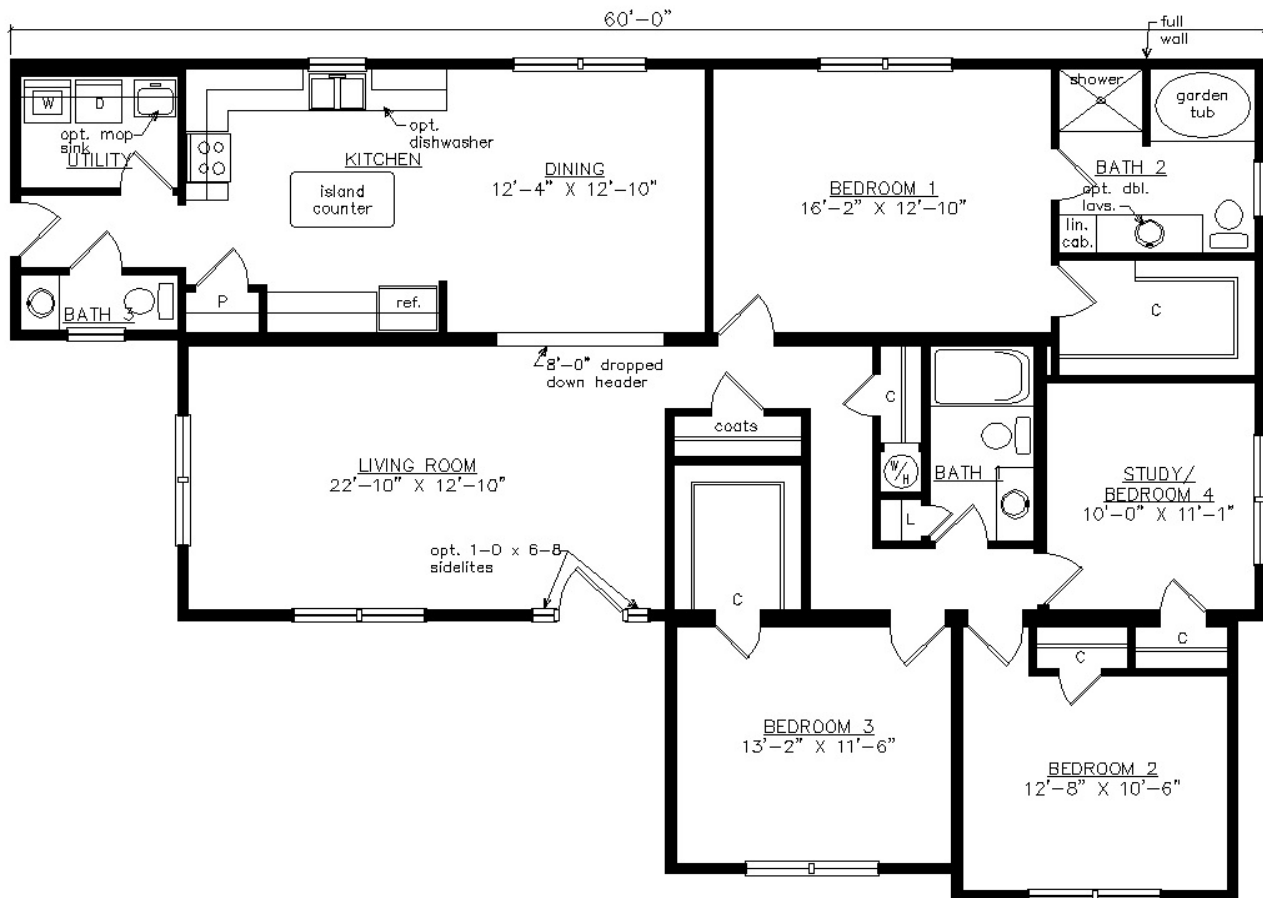


SHOWN WITH OPTIONAL 6" EXTERIOR WALLS

SALEM



SHOWN WITH OPTIONAL TRIANGLE GABLE VENTS,
FANLITE DOOR AND DOOR SIDELITES
1886 SQ. FT. BEDROOMS: 4 BATHS: 2.5

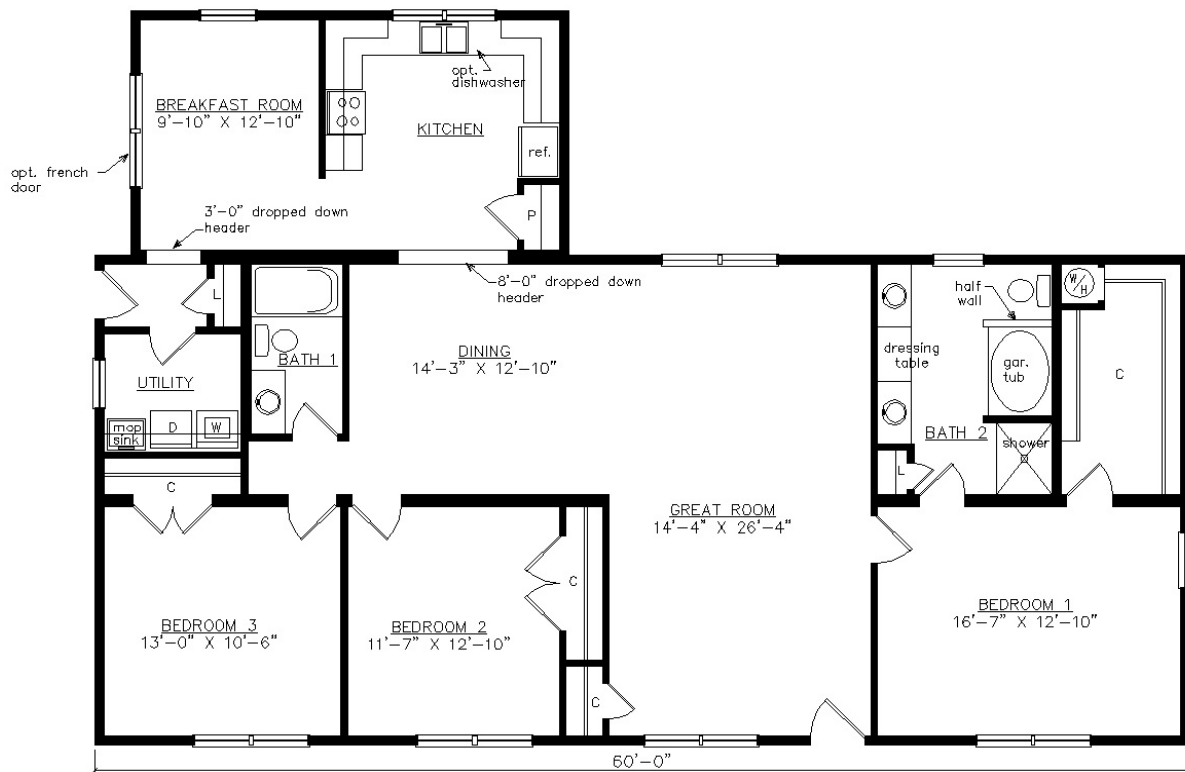


SHOWN WITH OPTIONAL 6" EXTERIOR WALLS

CHESTERFIELD



SHOWN WITH OPTIONAL ON-SITE GABLE PORCH,
TRIANGLE GABLE VENTS AND FANLITE DOOR
2014 SQ. FT. BEDROOMS: 3 BATHS: 2

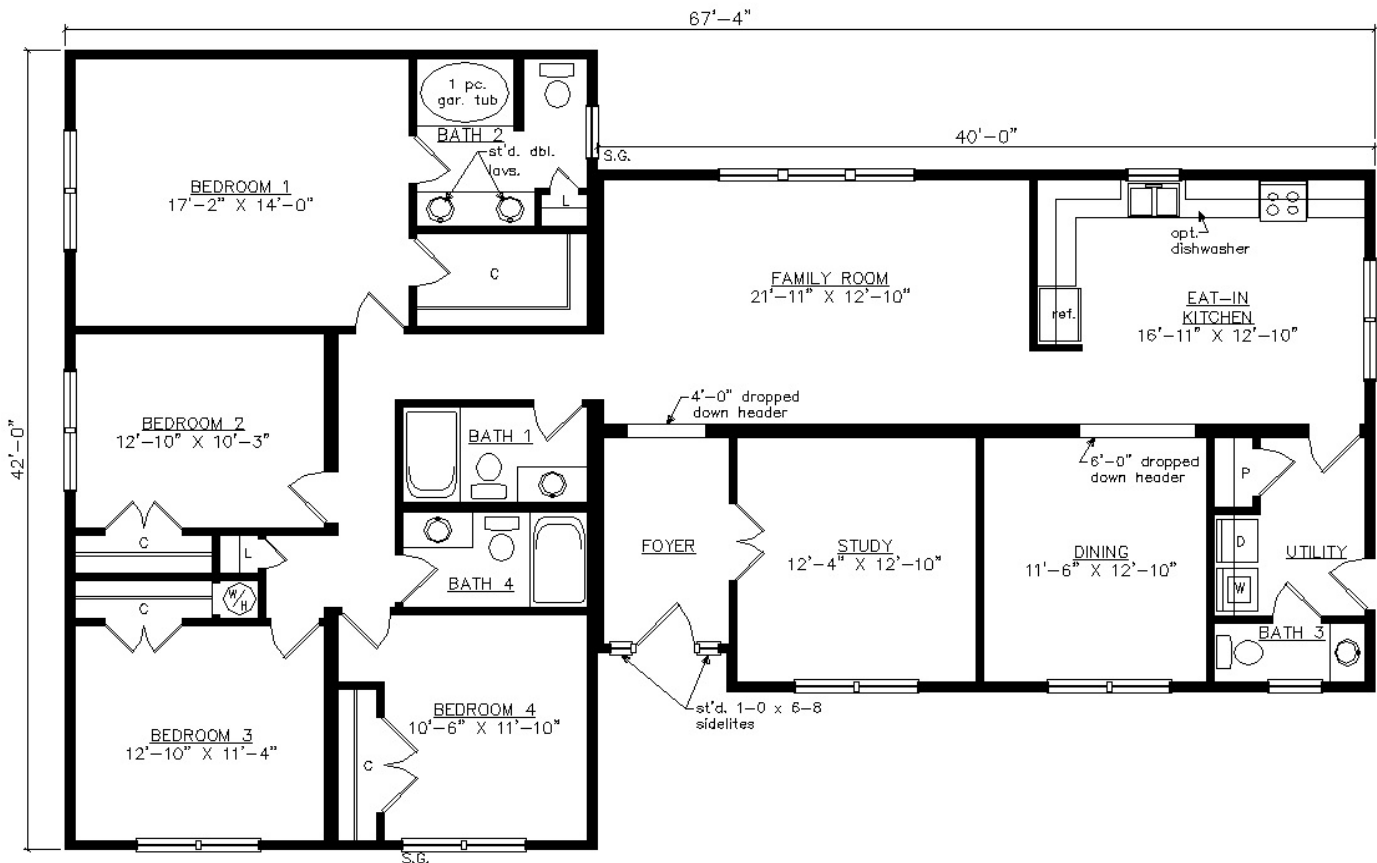


SHOWN WITH OPTIONAL 6" EXTERIOR WALLS

CHARLESTON



SHOWN WITH OPTIONAL ON-SITE BUILT PORCH, TRIANGLE GABLE VENTS, FANLITE DOOR, DOOR SIDELITES AND ACCENT SHAKES
 2241 SQ. FT. BEDROOMS: 4 BATHS: 3.5



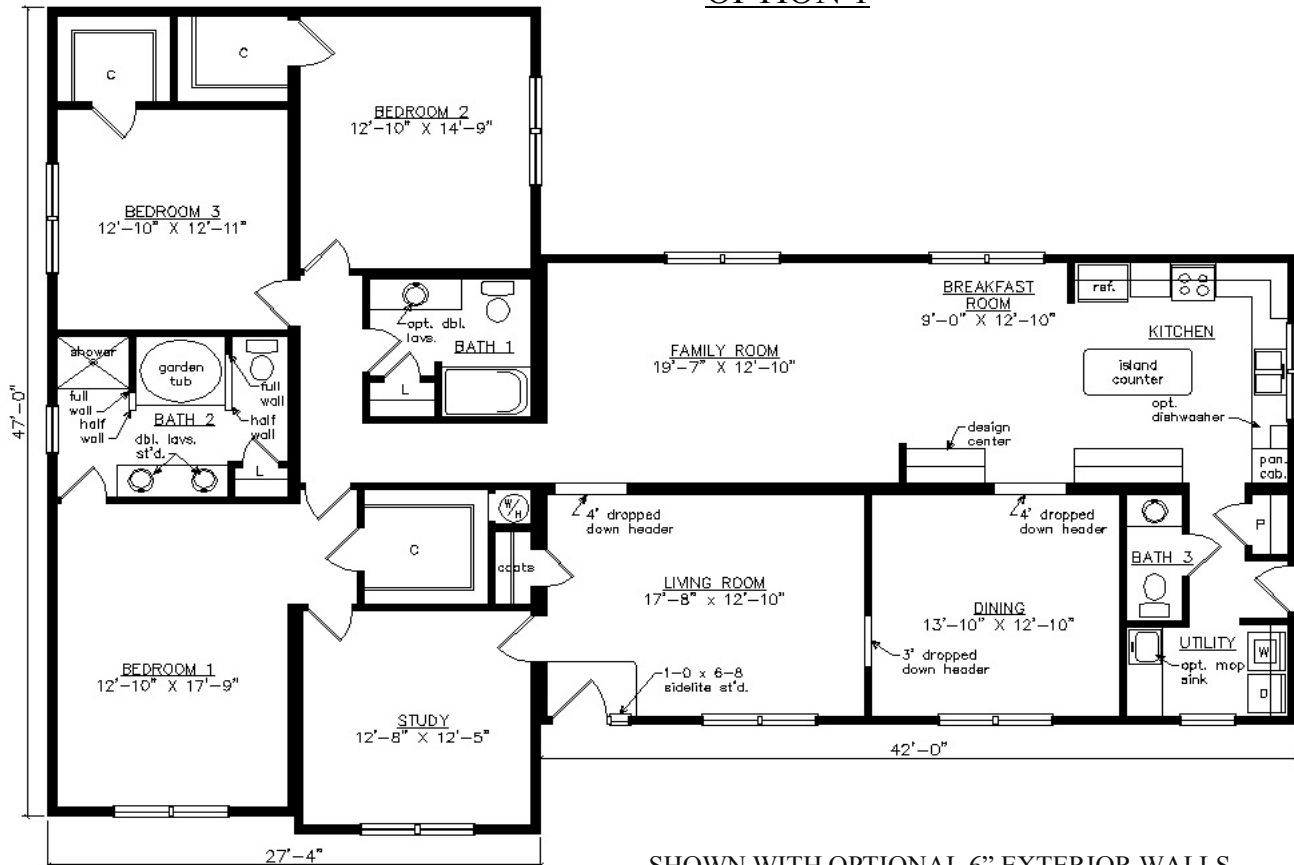
SHOWN WITH OPTIONAL 6" EXTERIOR WALLS

WILLIAMSTON



SHOWN WITH OPTIONAL ON-SITE BUILT PORCH, FANLITE DOOR,
DOOR SIDELITE, TRIANGLE GABLE VENT AND ACCENT SHAKES
2446 Sq. Ft. BEDROOMS: 3 BATHS: 2.5

OPTION 1



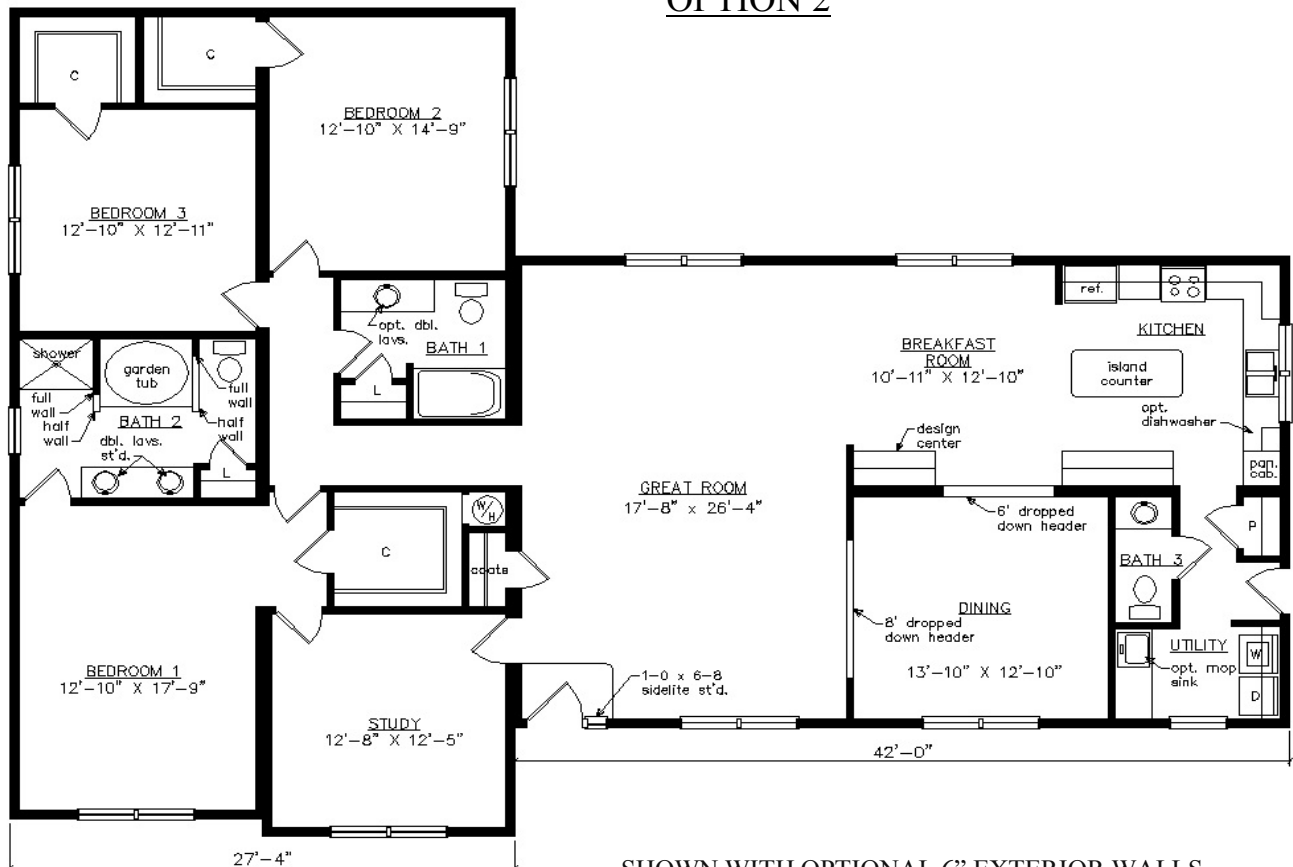
SHOWN WITH OPTIONAL 6" EXTERIOR WALLS

WILLIAMSTON OPEN



SHOWN WITH OPTIONAL ON-SITE BUILT PORCH, FANLITE DOOR, DOOR SIDELITE, TRIANGLE GABLE VENT AND ACCENT SHAKES
 2446 Sq. Ft. BEDROOMS: 3 BATHS: 2.5

OPTION 2



SHOWN WITH OPTIONAL 6" EXTERIOR WALLS